

Water Sensitive SA.
27 May 2021

Permeable Pavements

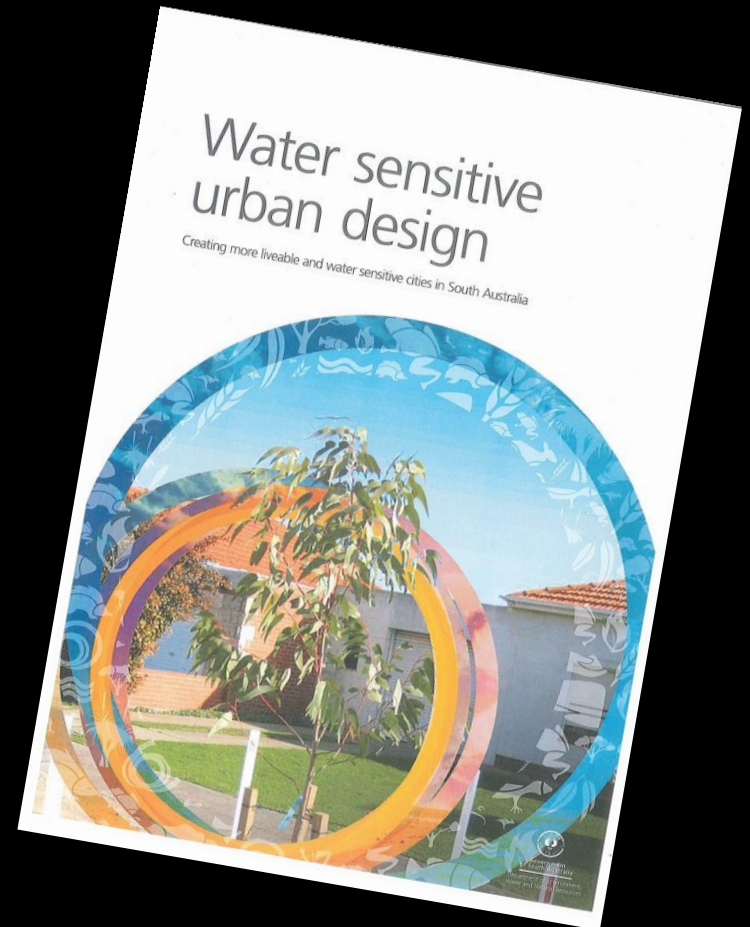
Simplistically Complicated, but Easy.....

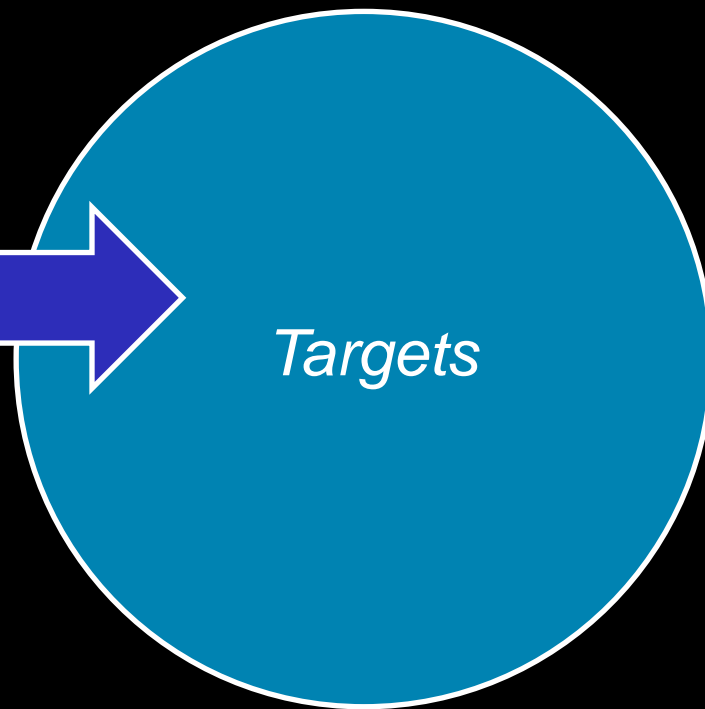
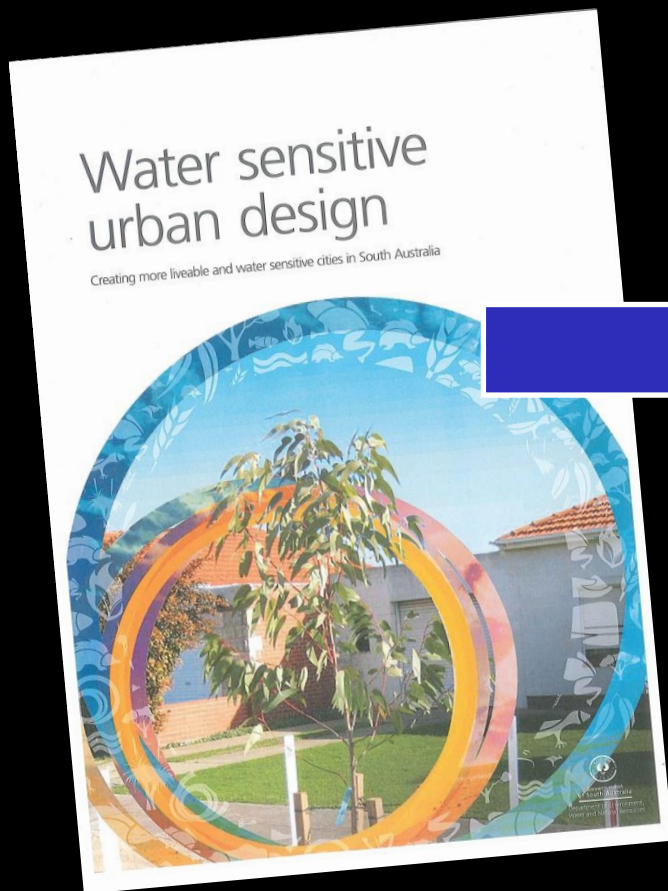


What is WSUD (Water Sensitive Urban Design)

*“WSUD is a well recognised approach to managing water in urban environments in a way that minimises the negative impacts of urbanisation and maximises economic, social and environmental benefits. It has the potential to deliver more liveable cities by providing green space, assisting the management of flood risks and impacts, reducing urban temperatures, maintaining home gardens, higher property values, reducing the flow of pollutants to major coastal recreation areas and minimising the need for expensive infrastructure upgrades.” *1*

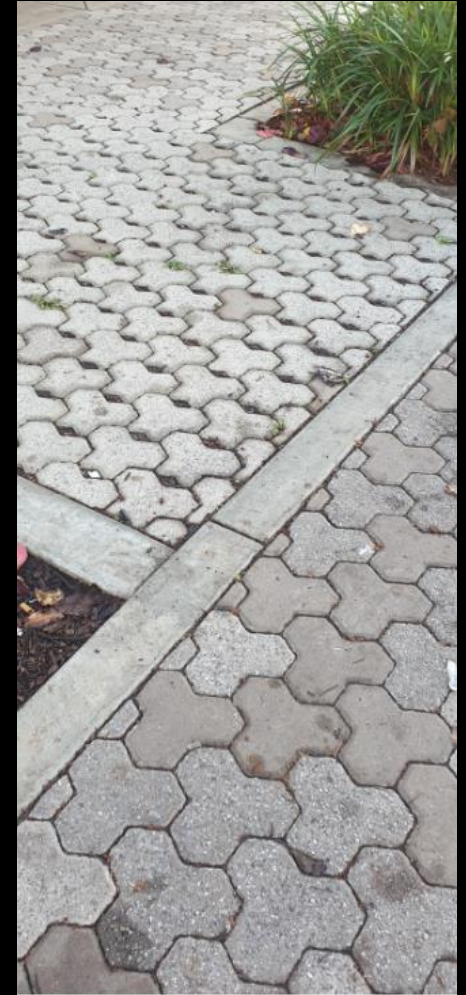
**1 - Water Sensitive Urban Design - Creating more liveable and water sensitive cities in South Australia
Department of Environment, Water and Natural Resources - 2013.*





*There's Permeable, Permeable, Permeable
and Permeable.....
and then some more.....*

- Infiltration vs Retention vs Detention
- Non-Trafficable vs Heavy Loaded vs Light Loaded
- Footprint Catchment vs Compounded Catchment



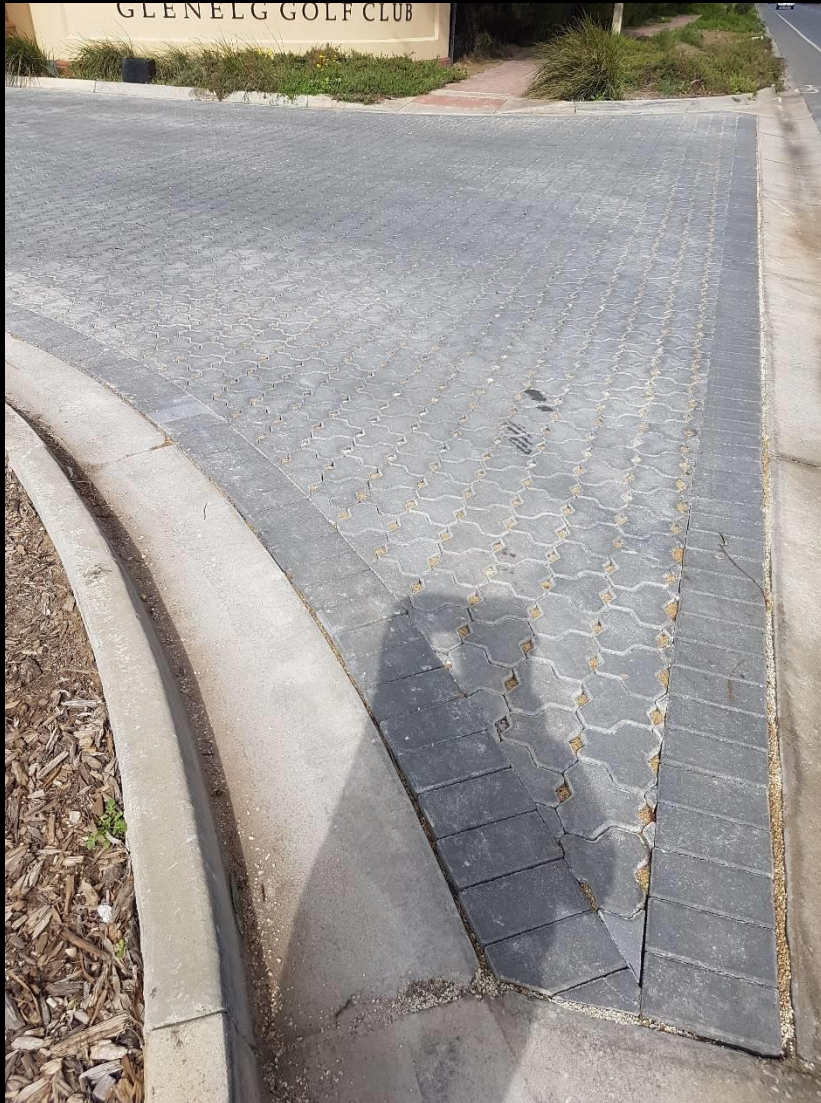
Pick Your Why(s)

(Hint: You can have more than one.....)

- Stormwater Quality Improvement
 - Detention of Stormwater
- Stormwater Quantity Reduction
- Stormwater Retention for Use
- Sustaining Trees, Landscape and 'Green' (Water and Air)
 - Shallow Groundwater Recharge
 - Lack of Grade
 - Lack of Drainage
 - Because you have too.....

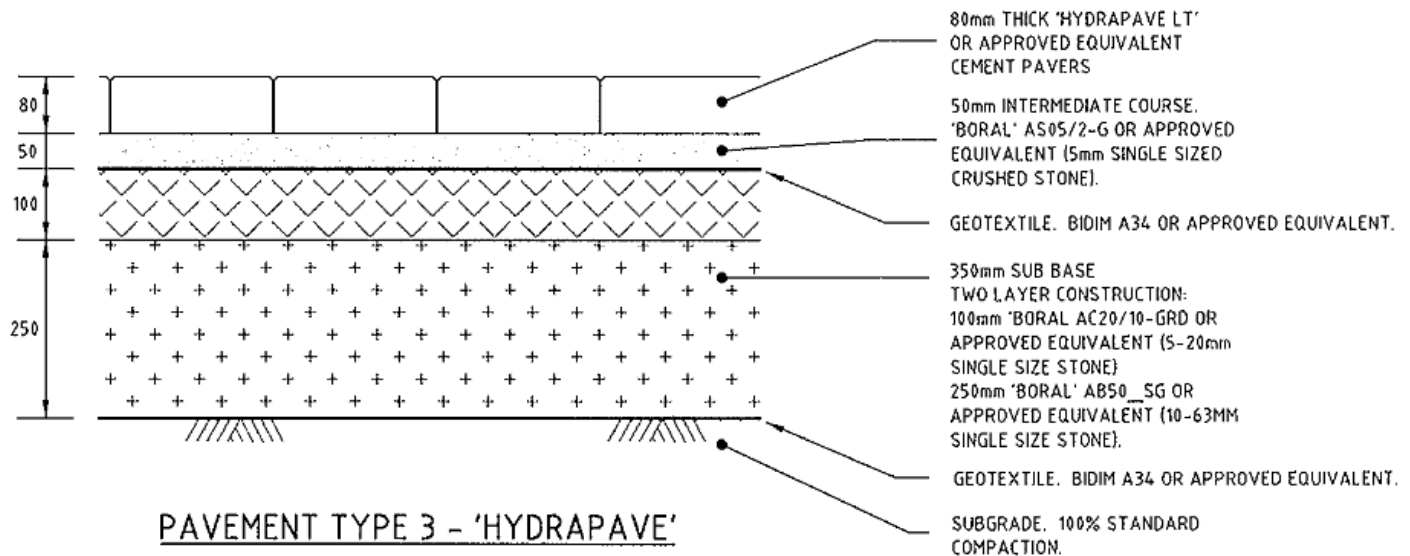








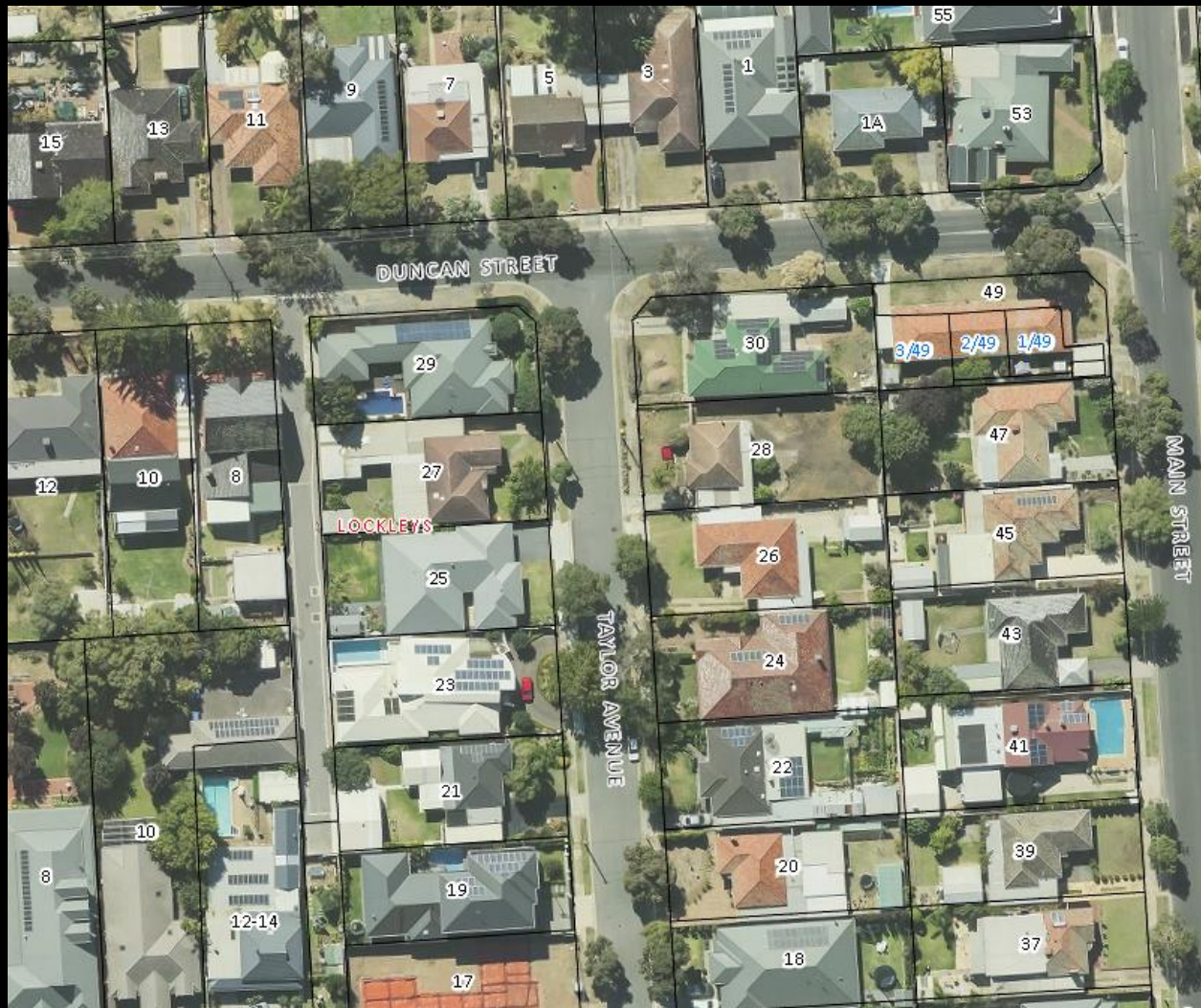


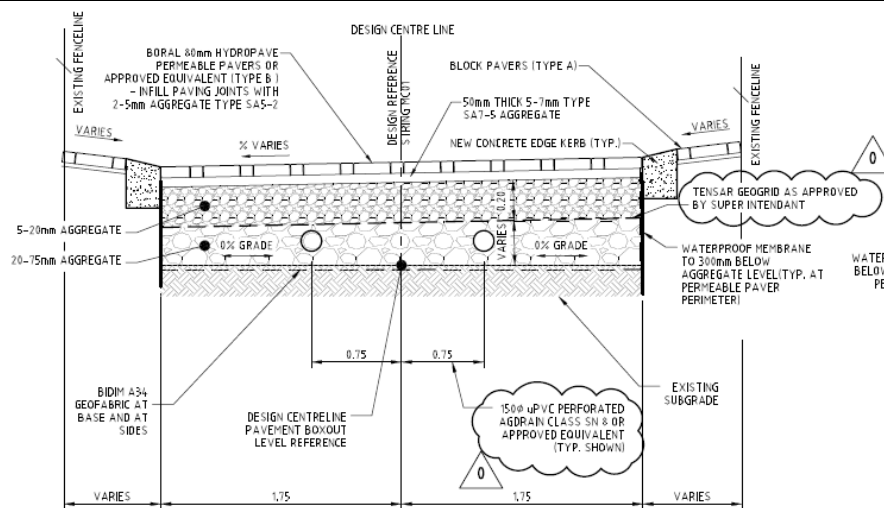
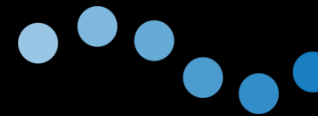


PAVEMENT TYPE 3 - 'HYDRAPAVE'

SCALE: 1:10

IMPORTANT NOTE: PAVEMENT MUST BE LAYED
IN ACCORDANCE WITH MANUFACTURER'S
SPECIFICATIONS

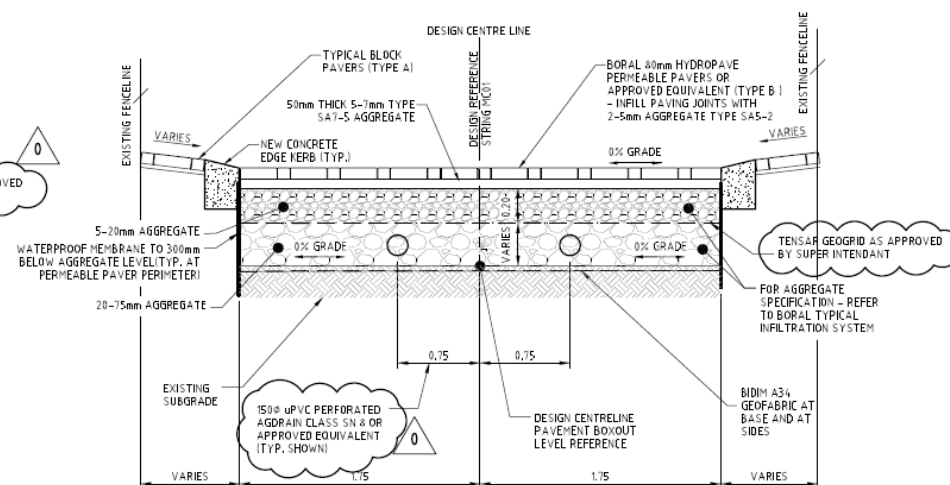




NOTE: FOR AGGREGATE SPECIFICATION - REFER TO BORAL TYPICAL INFILTRATION SYSTEM

SECTION A
01

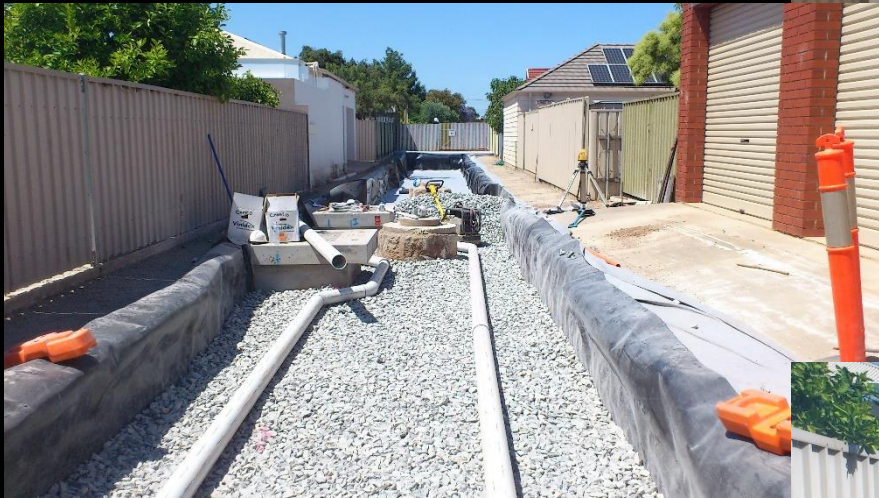
TYPICAL CROSS SECTION AT PERMEABLE PAVERS - POSITIVE ONE WAY CROSS FALL



NOTE: FOR AGGREGATE SPECIFICATION - REFER TO BORAL TYPICAL INFILTRATION SYSTEM

SECTION B
01

TYPICAL CROSS SECTION AT PERMEABLE PAVERS - 0% GRADE CROSSFALL

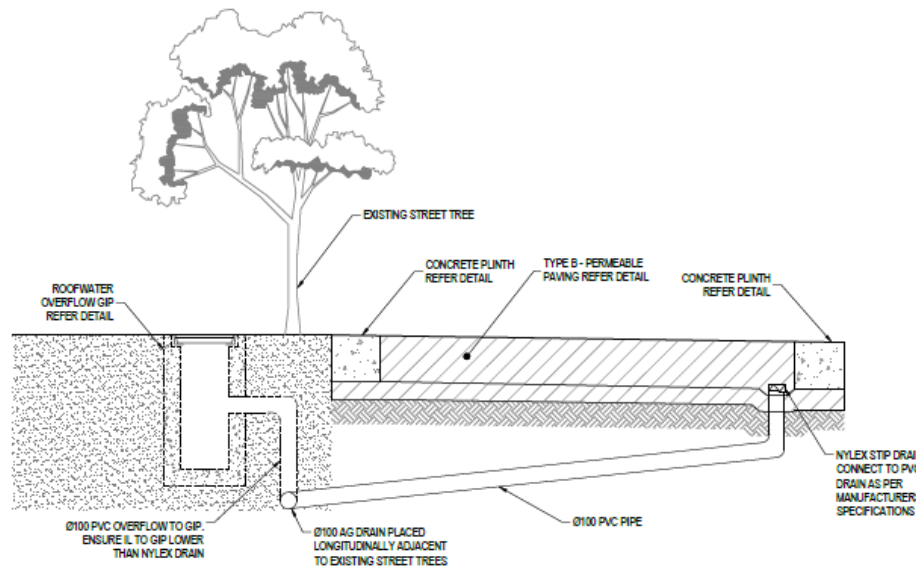




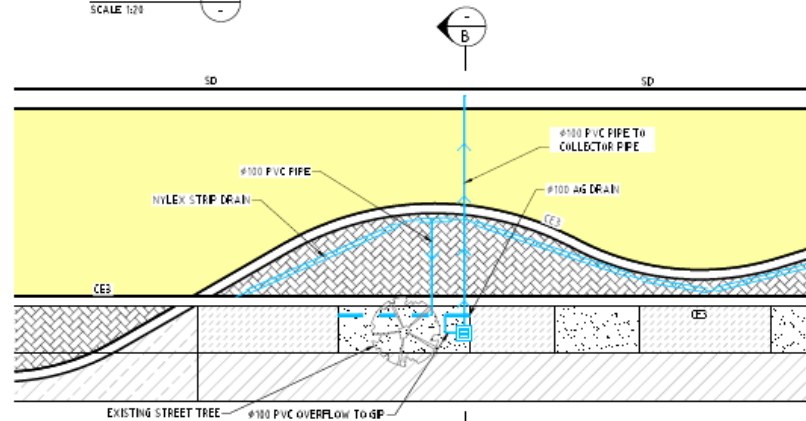






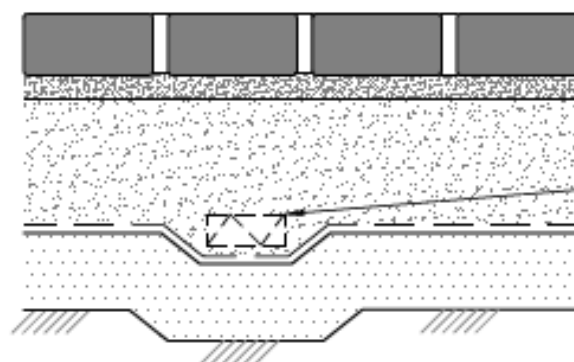


SECTION B
SCALE 1:20



TYPICAL PERMEABLE PAVEMENT DRAINAGE DETAIL
SCALE 1:100





ECOTRIHEX PAVERS (OR SIMILAR APPROVED)

30mm SAND (2-5mm AGGREGATE)

175mm (5-20mm SCREENINGS)

NYLEX STRIP DRAIN TYPICAL. CONNECT TO PVC
PIPE AS PER MANUFACTURES SPECIFICATION

GEOFABRIC

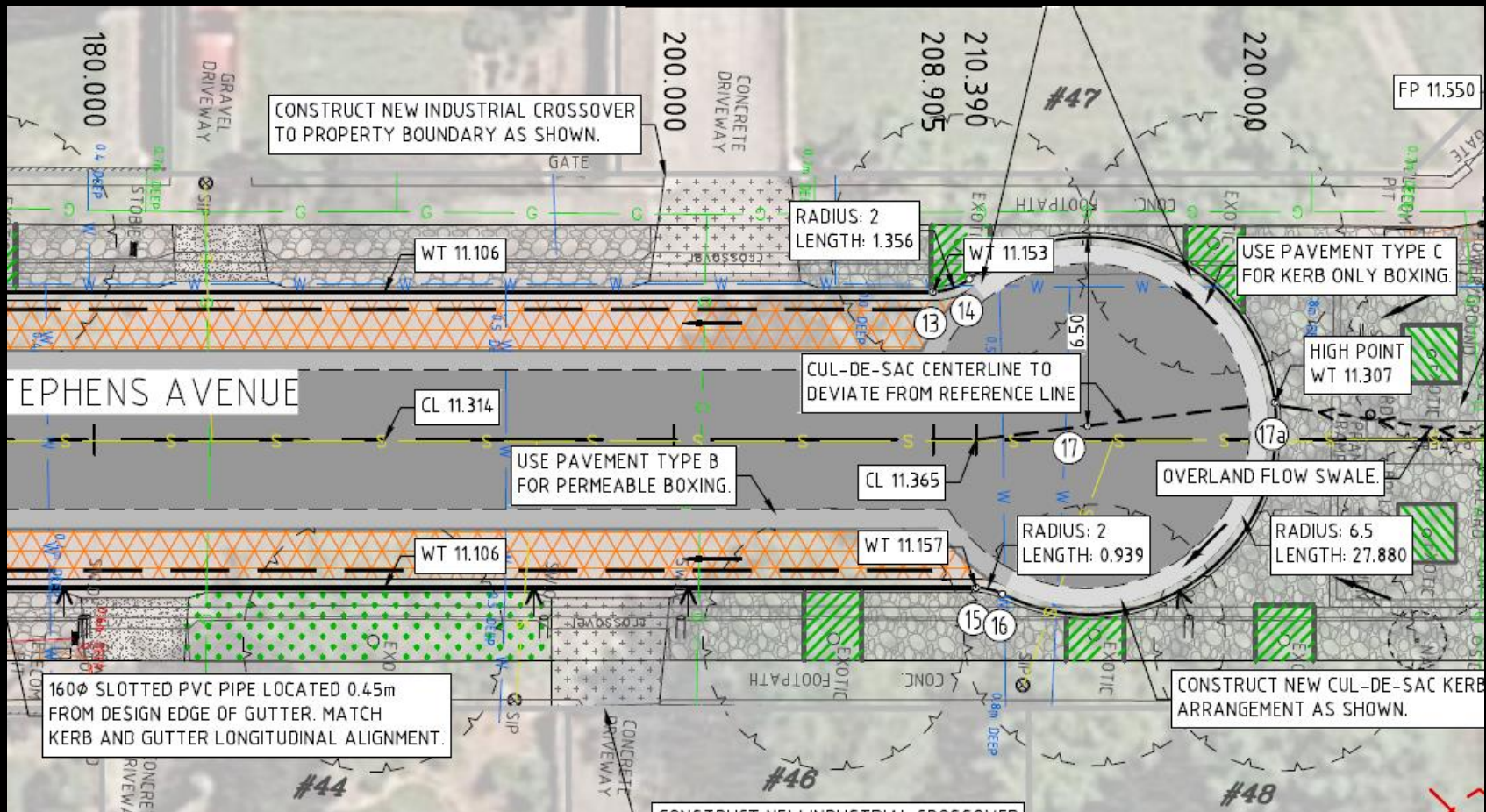
100mm PM1/20 AG COMPACT TO 98% MMDD

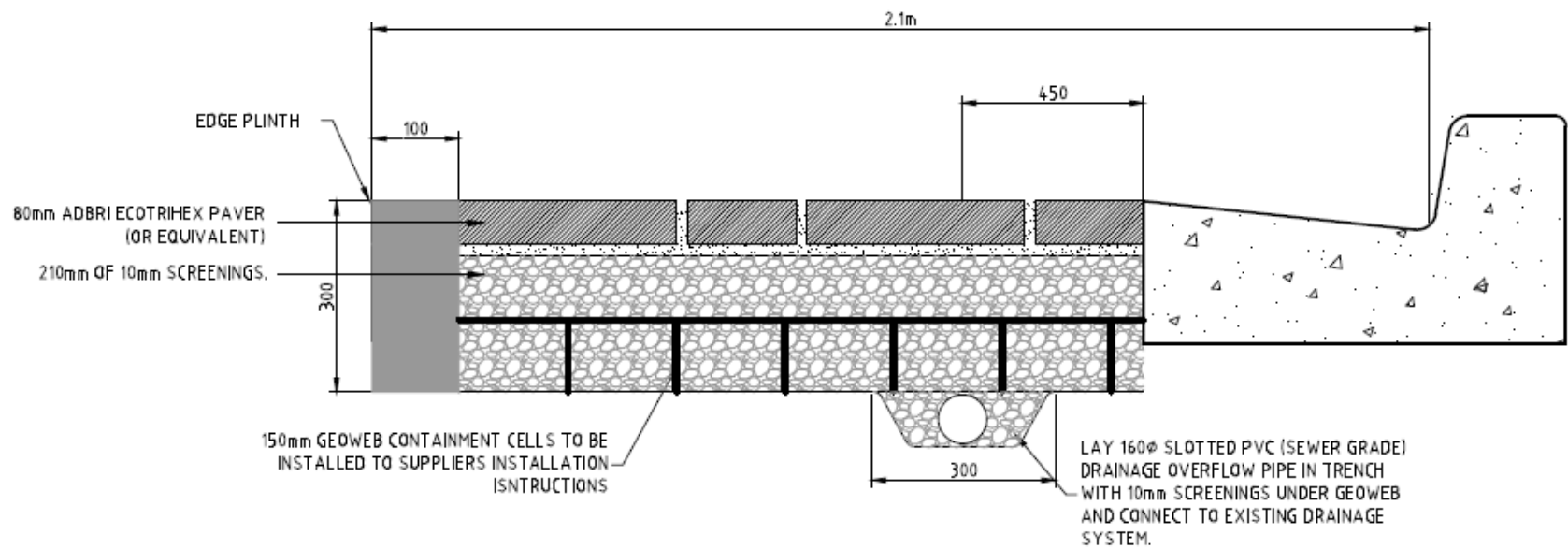
SUBGRADE COMPACTED TO 98% STANDARD

TYPE B - PERMEABLE PAVING (ECOTRIHEX PRODUCT)

SCALE 1:10

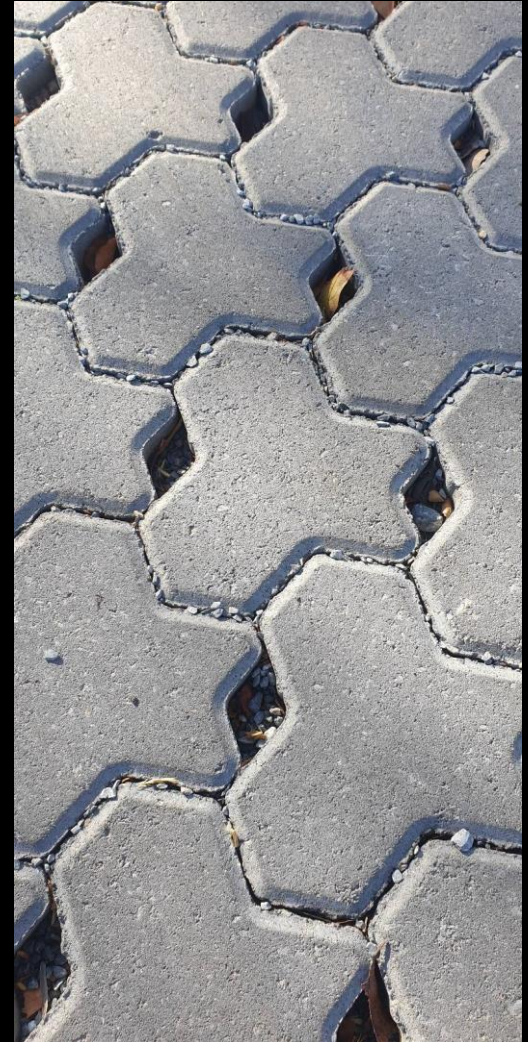


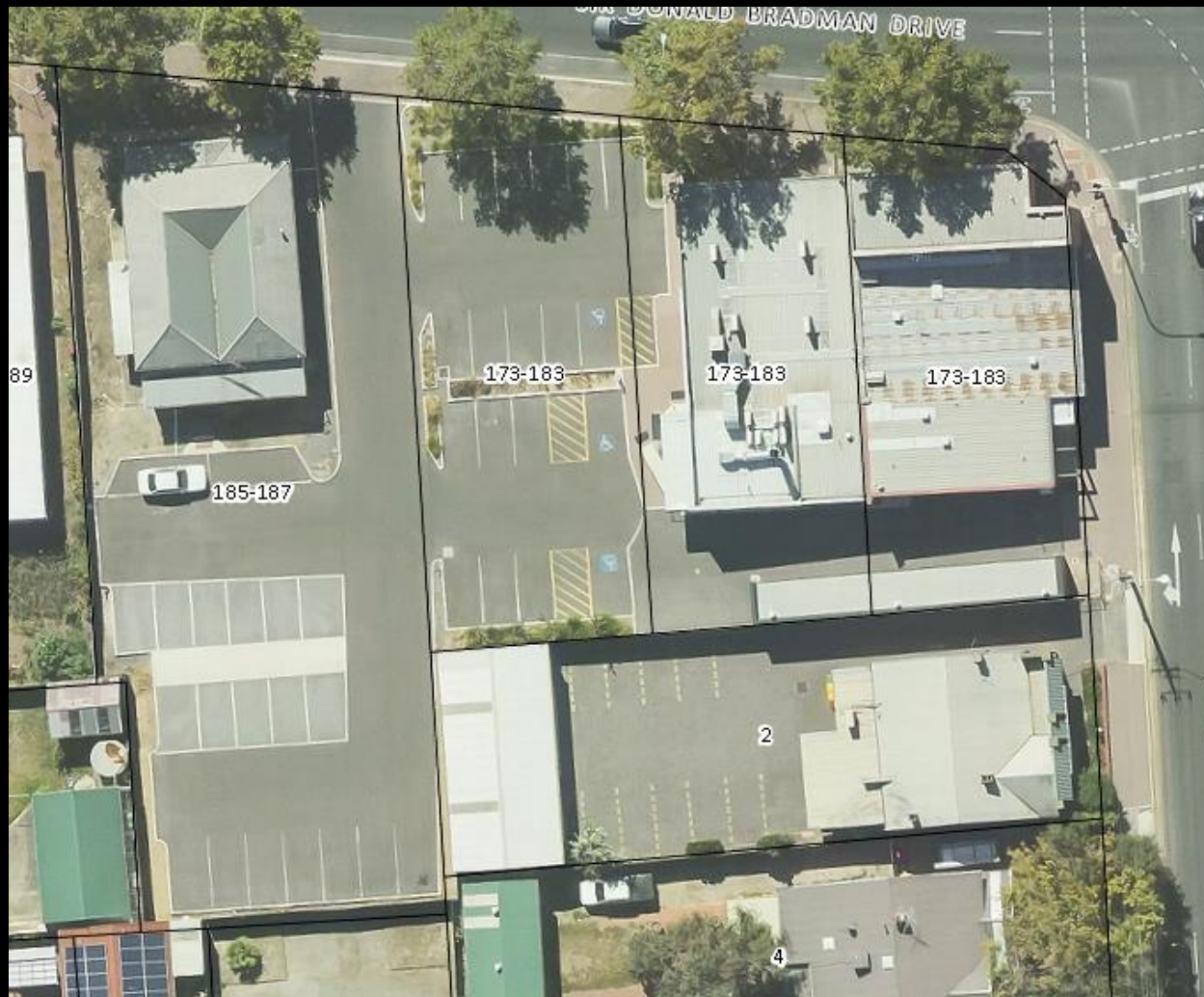




PERMEABLE PAVER PAVEMENT DETAIL



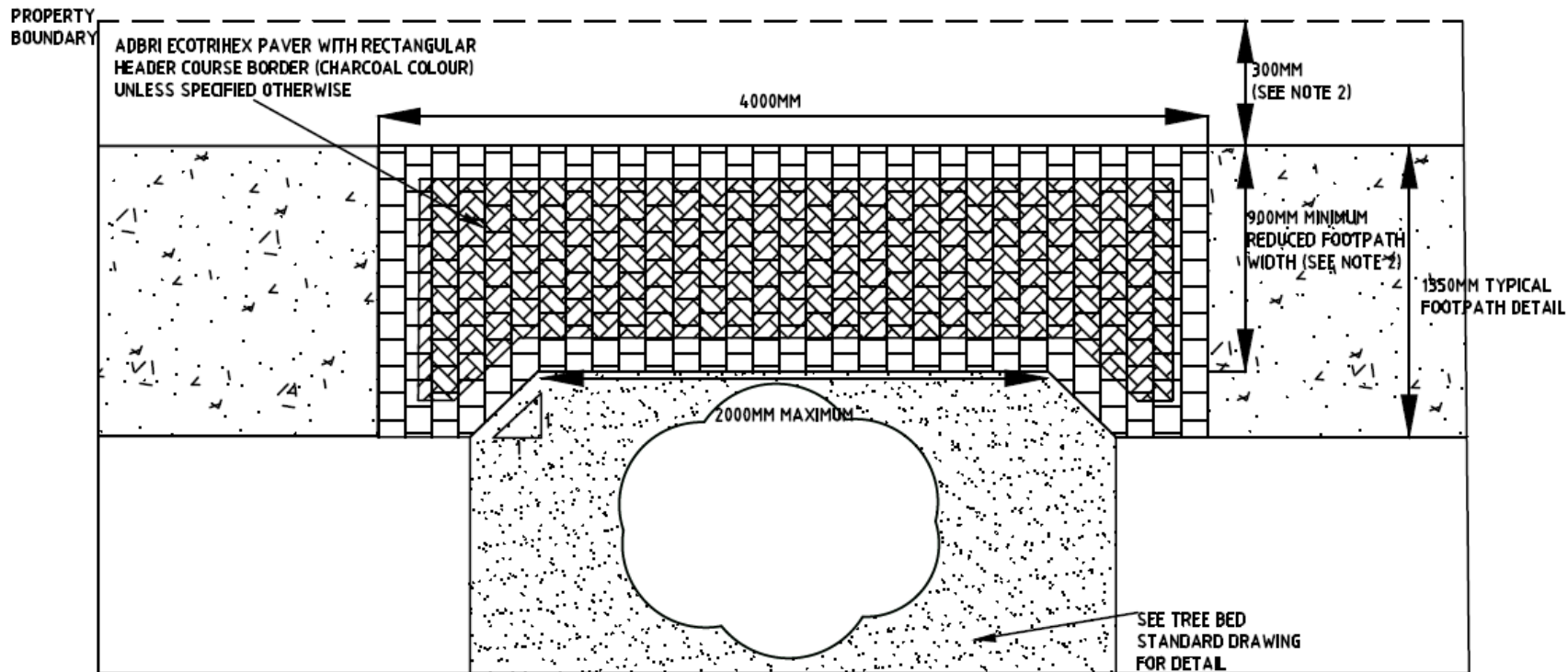




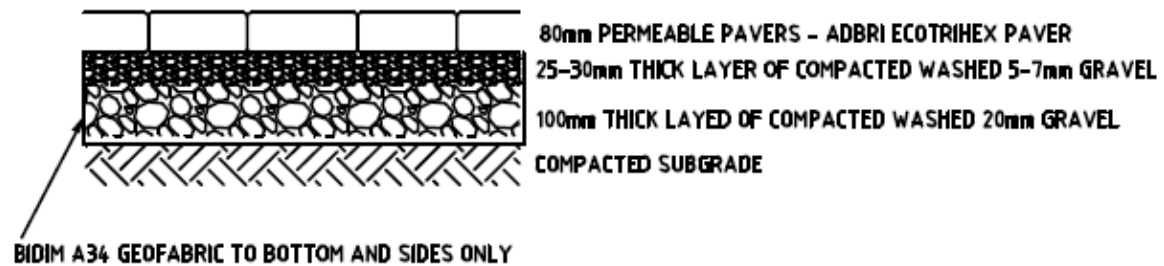






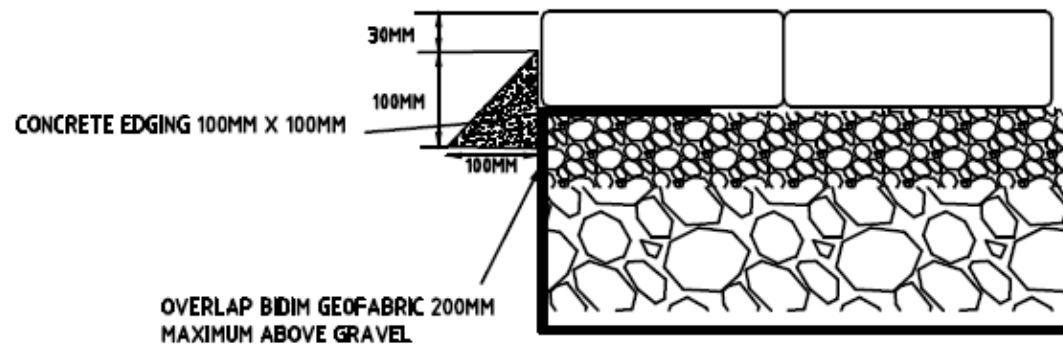


PERMEABLE BLOCK PAVING PAVEMENT TYPICAL LAYOUT
NTS



PERMEABLE BLOCK PAVING PAVEMENT DETAIL

NTS



CONCRETE EDGING DETAIL

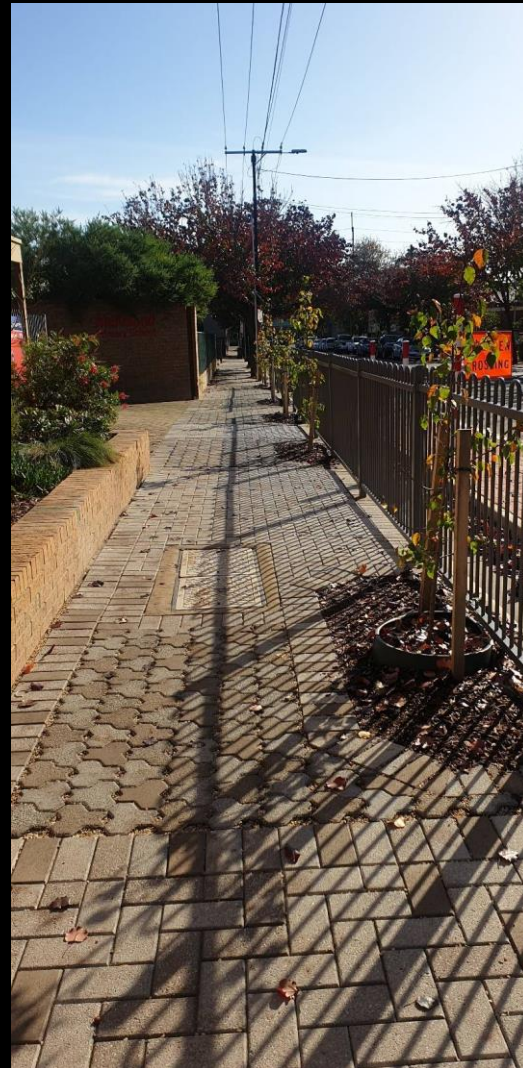
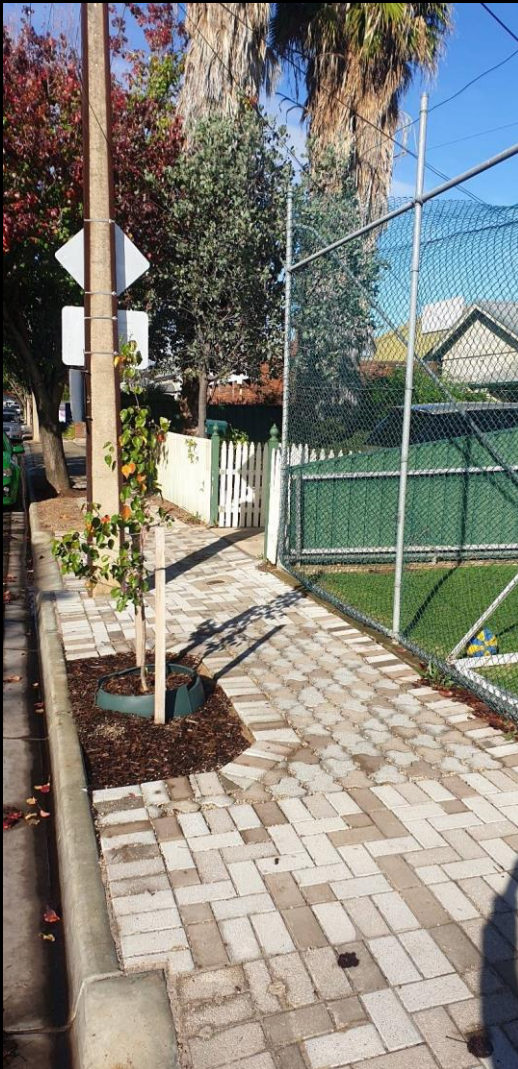
NTS











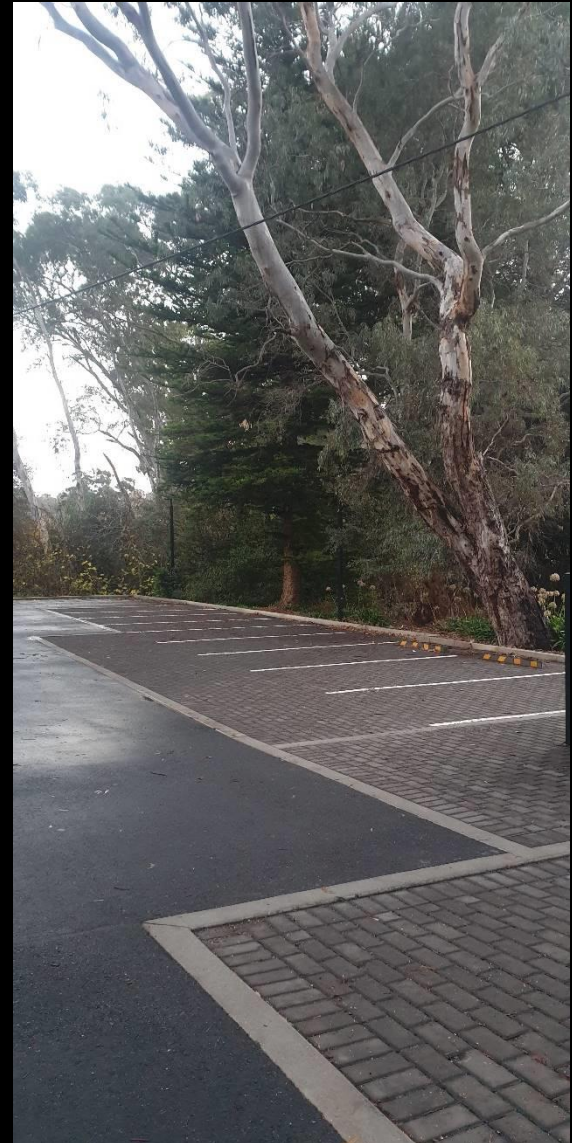






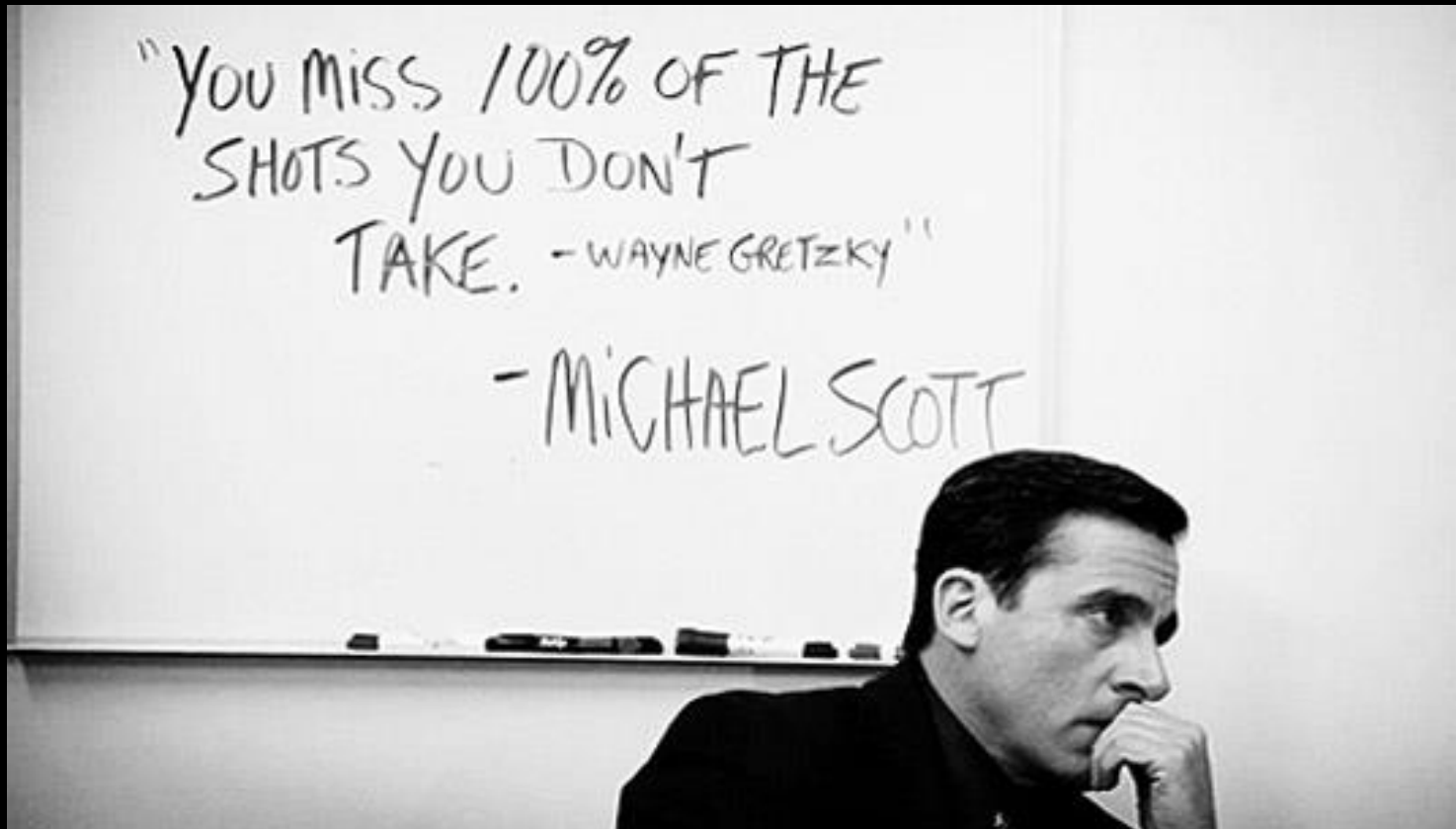








"Philosophical Moment"



JUST DO IT.

