

## 02 – Salisbury Terrace House / North Melbourne House

# Salisbury Terrace House

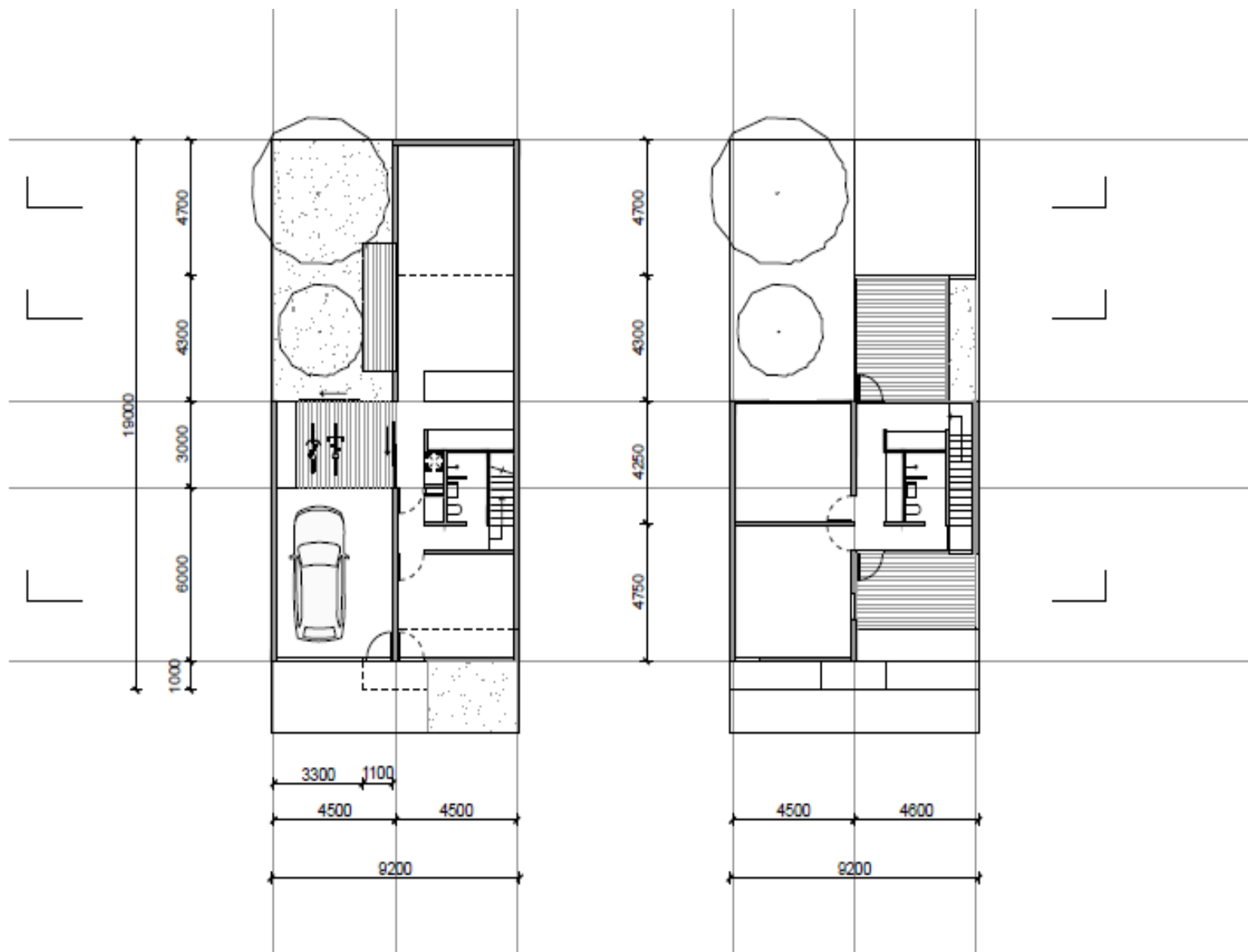


# North Melbourne House



NMBW Architecture Studio

*Image: Peter Bennetts*



Source: Cooperative Research Centre (CRC) for Water Sensitive Cities

# Salisbury Terrace House





# Salisbury Terrace House



# Salisbury Terrace House



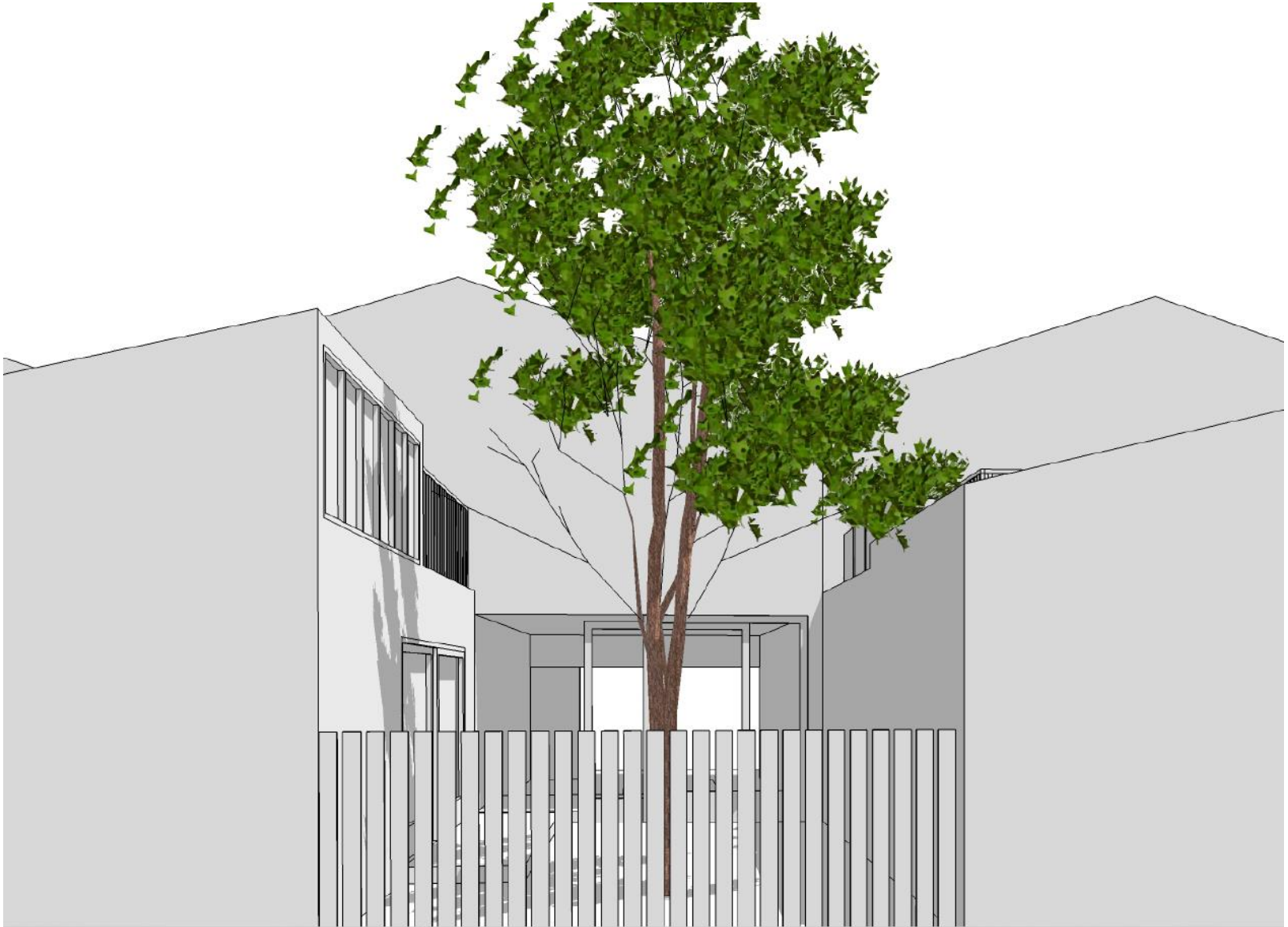


# North Melbourne House





# Salisbury Terrace House



*Source: Cooperative Research Centre (CRC) for Water Sensitive Cities*

# North Melbourne House



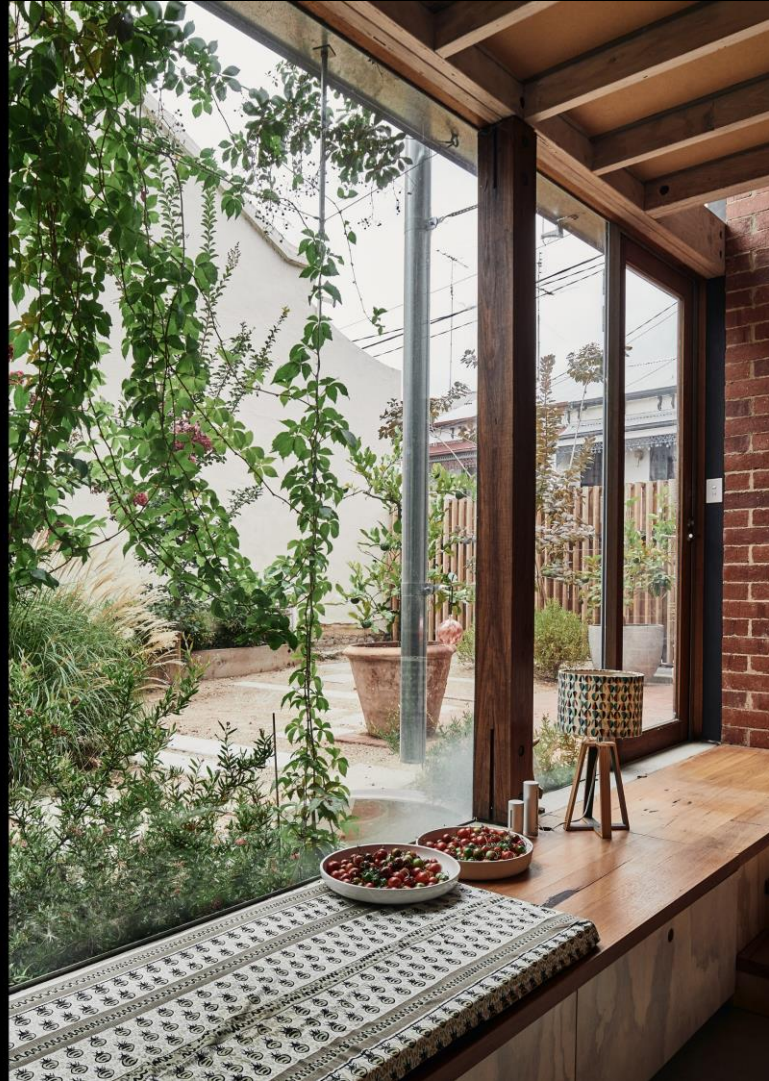


# North Melbourne House





# North Melbourne House



# North Melbourne House



NMBW Architecture Studio

*Image: Peter Bennetts*



## 2 lots side-by-side: B

Barkley Street – pilot project

Model	L-shaped courtyard
Site area	1605m <sup>2</sup>
Yield	8 x 3BR + 2 x 2BR
Density	62 dw/ha
Cars #	10
Garden area	580m <sup>2</sup> 36%
Considerations:	<ul style="list-style-type: none"> <li>• Optimal use of site areas (garden, parking + built form).</li> <li>• Larger dwellings but less yield than other options.</li> <li>• Common land minimised.</li> <li>• Solar access maintained through design of L-shaped model.</li> <li>• Comder dwellings with larger gardens are potentially a different market-offer.</li> </ul>

