



Smarter utilisation of our networks
towards more effective change

Mellissa Bradley, Program Manager

2 May 2016



Water Sensitive SA - established to build the capacity of all organisations with a role in the planning, design, approval, construction or maintenance of new developments and infrastructure to implement best practice water sensitive urban design (WSUD)

Water Sensitive SA Program Partners



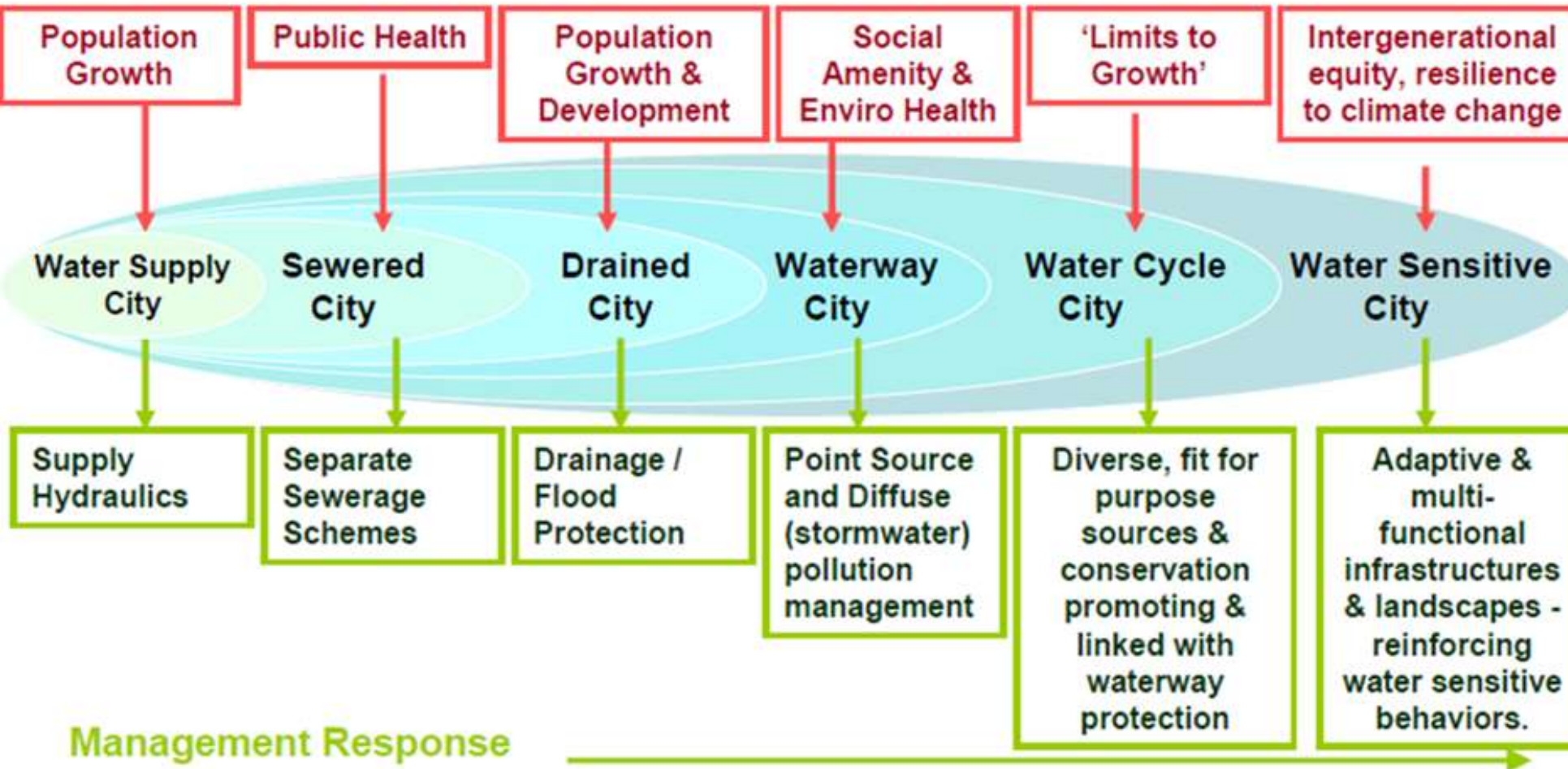
Natural Resources
Adelaide and Mt Lofty Ranges

LOCAL GOVERNMENT RESEARCH & DEVELOPMENT SCHEME



Urban Water Transition Phases

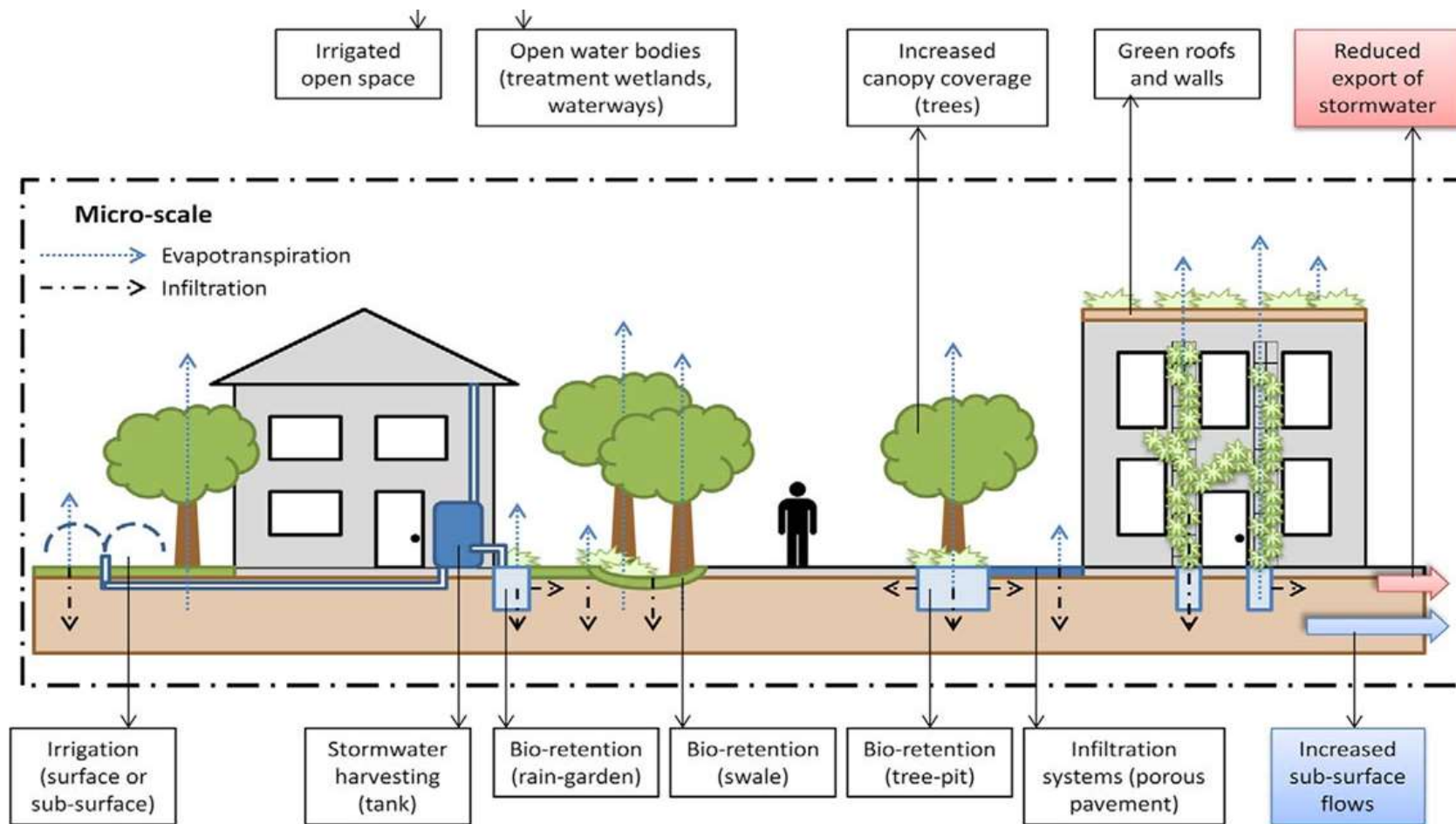
DRIVERS



Management Response



Urban water cycle Living Cities



Source: Coutts et al. (2012)

We are getting this....



Source: Tonkin Consulting



But we want this....



Unions Street Dulwich, B-Pods
(infiltration systems)



Angas Street raingarden



Christie Walk Source: Baden Myers



www.cocksauld.com.au

Future policy for SA?....

“To reintegrate urban water into the landscape to facilitate a range of benefits including microclimate cooling, local habitat and provision of attractive spaces for community use and wellbeing”.

City of Port Phillip (Vic) Planning scheme.



Randolph Ave, Fullarton – raingarden and stormwater wells

Transition factors to enable the water cycle & water sensitive city

1. Socio-political capital
2. Champions
3. Accountability
4. Trusted & reliable science
5. Market receptivity
6. Bridging organisations
7. Binding targets
8. Strategic funding
9. Demonstration projects

Source: Rebekah Brown, et al



Oaklands Park Wetland, City of Marion
Photo: M. Mullan

Transition factors to enable the water cycle & water sensitive city

1. Socio-political capital
2. Champions
3. Accountability
4. Trusted & reliable science
5. Market receptivity
6. Bridging organisations
7. Binding targets
8. Strategic funding
9. Demonstration projects

Source: Rebekah Brown, et al



Oaklands Park Wetland, City of Marion
Photo: M. Mullan

What is in our current tool kit?

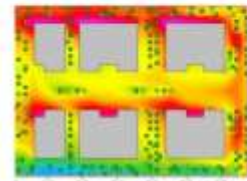


- Policy reform
- Training & seminars
- Community of practice
- Website – information sharing
- E-newsletter
- Stakeholder Engagement Plan
- Research adoption pathways



Water Sensitive SA is a capacity building program that will provide stakeholders across all disciplines within the development and urban water management industries, with the support they need to achieve the best water sensitive urban design outcomes

**LIVEABLE
WATER SENSITIVE
COMMUNITIES**



What does liveable, water sensitive infill development



SA practitioners support WSUD performance based



WSUD projects in SA - case studies, interactive map



Training: Construction of WSUD assets - 25 May 2016

Who are our urban water leaders?

- The champion leader
- The enabling leader
- The cross-boundary leader
- The thought leader
- The strategic leader
- The trusted advisor

Taylor *et al*, 2015



Letchford Street Reserve, Bedford Park
City of Mitcham



John Thwaites – political influencing 101



1. Know what you want to achieve and be clear about it: Make it easy to adopt.
2. Know what the Government wants to achieve: How do you fit in?
3. Identify who has the power to make the decision: What will influence them?
4. Collaborate: Come as a team.
5. Understand the power of values and emotion: Facts are not enough!
6. Put your effort into communication: Send in your best players.
7. Be persistent!
8. Timing is everything: Carpe diem.



Manifesto



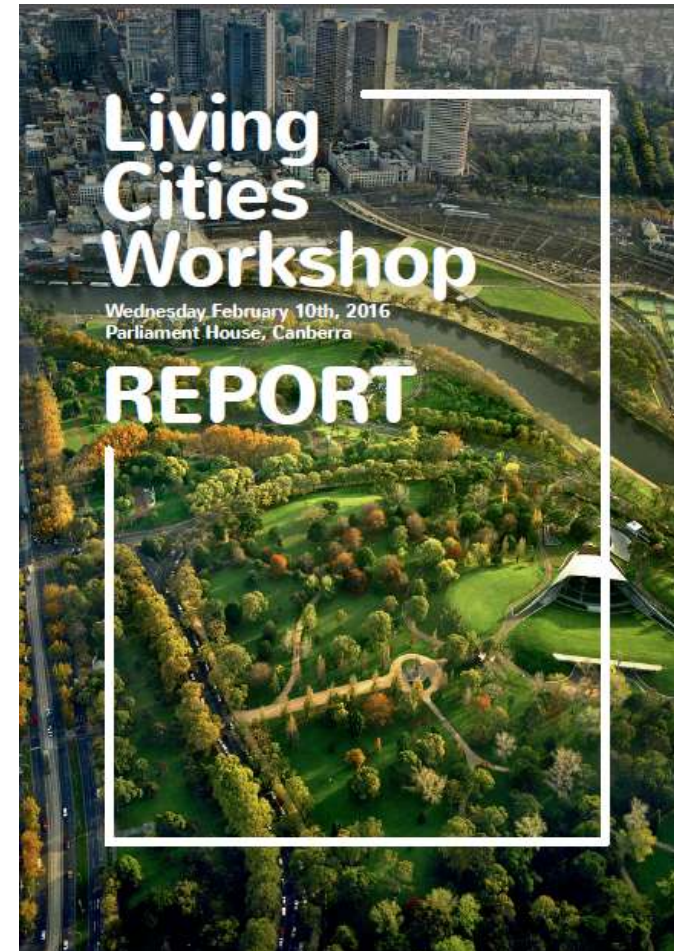
Create a coalition

23 March 2016 the landscape changed



Timing is everything

- National Living Cities Alliance
- 30 Year Plan for Greater Adelaide – 5 year review
- Planning & Design Code, under new *Planning Development & Infrastructure Bill 2016*
- *Carbon neutral Adelaide*
- *Healthy by Design*
- *Regional Climate Change Adaptation Plans*
- *Green Infrastructure Project*



Green streets – Grey
to Green Pilot Project

Local Government
Green Infrastructure
package

Our Influence Strategy

1. Establish a point of view.
2. Write a manifesto.
3. Create a coalition.
4. Pick your targets.
5. Co-opt and neutralize.
6. Find a translator.
7. Win small, win early, win often.



Cooke Reserve, Royal Park Source: City of Charles Sturt

Building a business case for a water sensitive city



The Manifesto



- Sustainable economic growth
- Climate resilience
- Urban form and liveability

CRC for Water Sensitive Cities

Our Networking Plan – some highlights



Lightsview.com.au

- Connect with “Inspiring SA Group” – chief scientist, Community engagement with science
- Engage with UDIA – showcasing best practice, branding opportunities
- Renewal SA – Neighbourhood Renewal Program
- MoU with LGA and DPTI – shared goals and collaborations
- Healthy by Design – learn from their model

What can the NRM adaptation network bring to the coalition?



- Timing is everything.
- Now is best opportunity in the past 10 years to advance the living cities/communities agenda
- Climate adaptation key driver