



Adelaide Hills Council
Sustainability Advisory Group

WSUD at a range of scales

Mellissa Bradley, Program Manager

2 February 2016



Water Sensitive SA - established to build the capacity of all organisations with a role in the planning, design, approval, construction or maintenance of new developments and infrastructure to implement best practice water sensitive urban design (WSUD)

What we do



- WSUD policy development and implementation pathways
- networking opportunities and peer-to-peer learning on strategic, policy and technical matters
- specialist training to address key knowledge and skills gaps
- more accessible WSUD research for practitioners
- resource development, including guidelines and tools
- information sharing through our website, e-newsletter, blog articles and forums.

Program Partners



LOCAL GOVERNMENT RESEARCH & DEVELOPMENT SCHEME





*“Water is an essential element
of placemaking”*

Tony Wong, CRC for Water Sensitive Cities (2011)

Oaklands Wetland

Source: Michael Mullan,

Water sensitive **cities** communities



Liveable



Sustainable

Source: P.Coombes



Productive



Resilient

Principles WSUD and IWCM



- Re-integrate water back into urban landscape – create microclimate
- Re-use of water at source (or close as possible)
- Protect receiving water quality (streams and marine)
- Fit for purpose water use
- Solutions at a range of scales



Living Adelaide – 30 Year Plan for GA



85% new housing stock from infill development



East Parkway, Northgate, Lightsview



Bowden Urban Village

Business as usual will deliver this.....

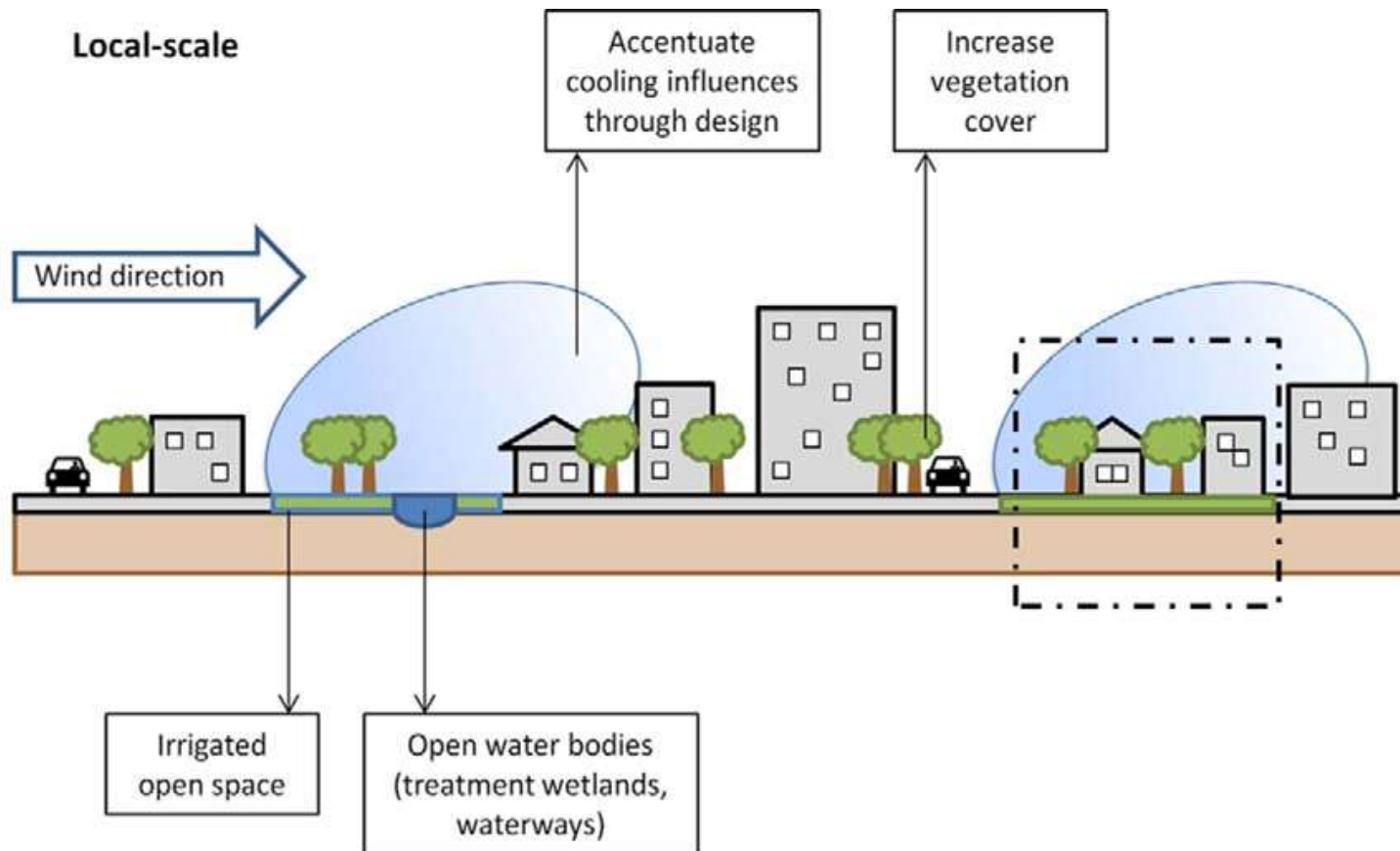


Business as usual Underperforming Asphalt



Source: AKing

What type of our urban water future do we want?

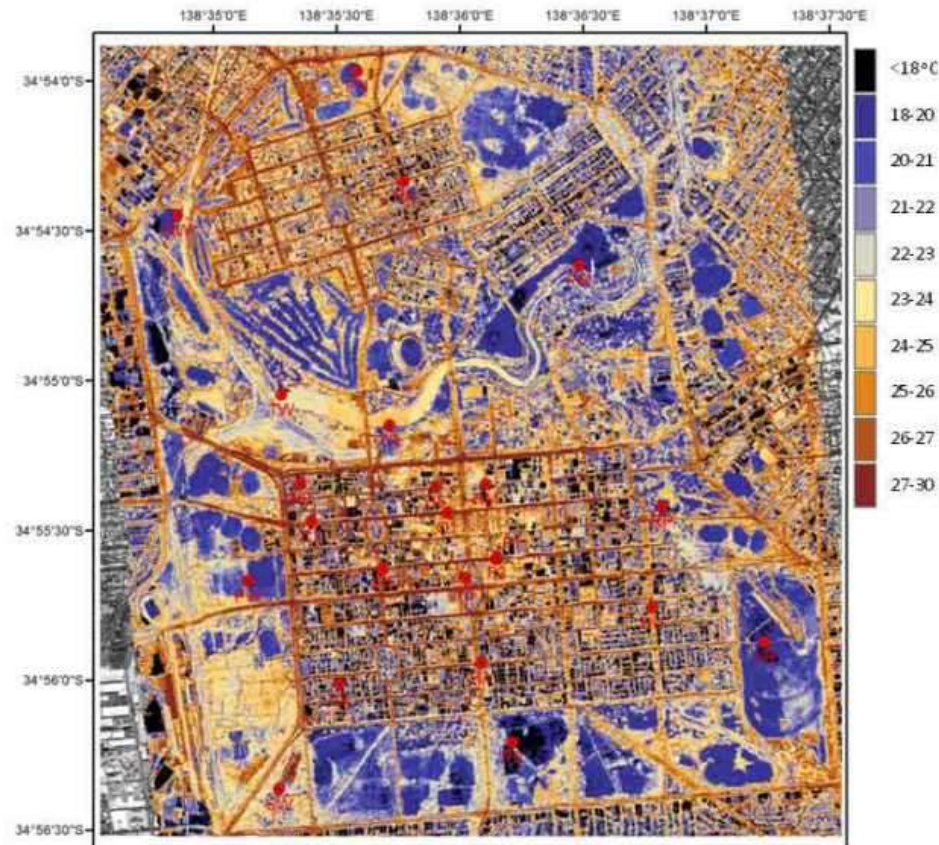


Urban water cycle of Living Cities

Source: Coutts et al

City Scale

Need to cool city temperatures



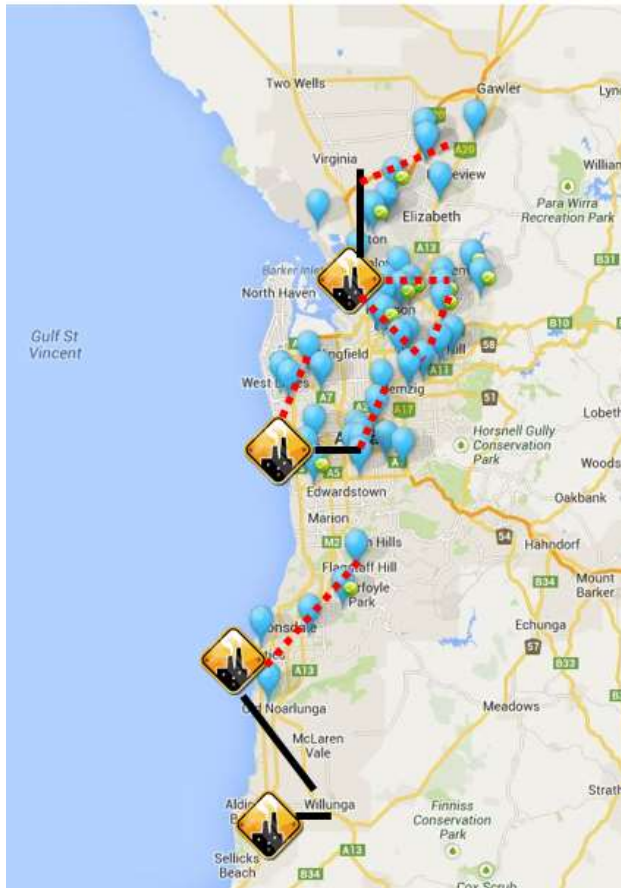
Surface brightness temperature of the CBD & North Adelaide, early hours of 7 March 2011

Source: Flinders University

City Scale



Recycled wastewater and treated stormwater – better together!



WWTP and MAR schemes Greater Adelaide region
Source: G.Ingleton, SA Water

Precinct Scale



Oaklands Wetland

Source: City of Marion

Precinct Scale



Blacktown City Council

Source: Mark Liebman

Precinct Scale



Kevin Taylor Park, Bowden Urban Village

Precinct scale



Letchford Street Reserve, Bedford Park



Source: City of Mitcham

Precinct



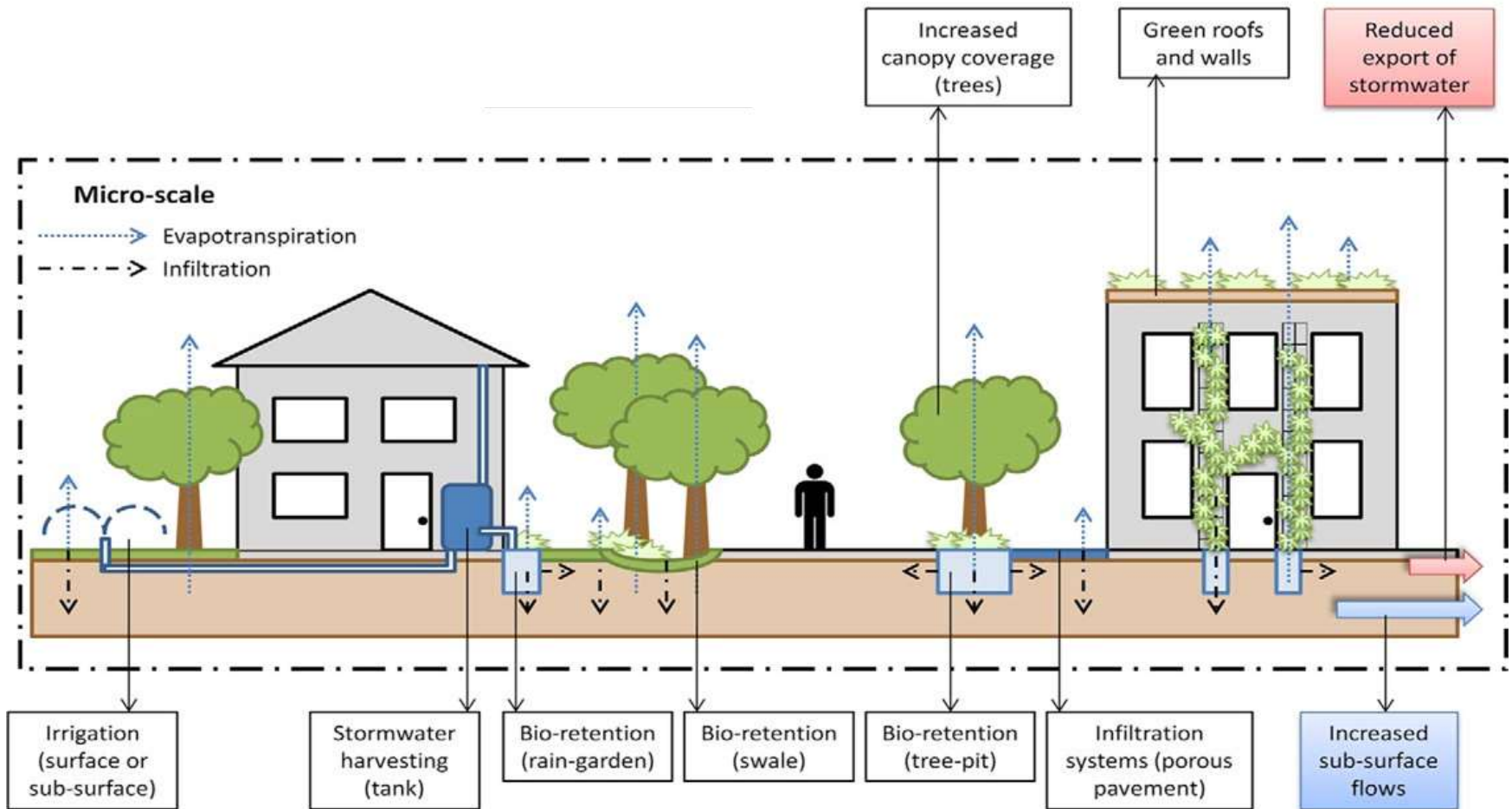
Lightsview infill development

Source map: www.lightsview.com.au



Urban water cycle

Living Cities



Source: Coutts et al. (2012)

Streetscape Scale



Afracaine Avenue, Northgate, Lightsview



Deacon Ave, Mile End



Franklin Street. Image: City of Adelaide



Lochiel Park, (SA)



Brooker Terrace, Richmond



Jellicoe Street, Auckland (NZ) Source: DesignFlow

Biofilters – Tree pits



Beachway Ave, Brooklyn Park

North Terrace Source: City of Adelaide

Streetscape Scale



Redward Ave, Greenacres, Lightsview

Streetscape Scale



Angas Street raingarden



Unions Street Dulwich, B-Pods
(infiltration systems)



Allotment Scale



Source: A.King

Allotment scale – Supersize your rainwater tank



Minimise impervious surface areas by:



Source: B.Myers



Source: www.houzz.com

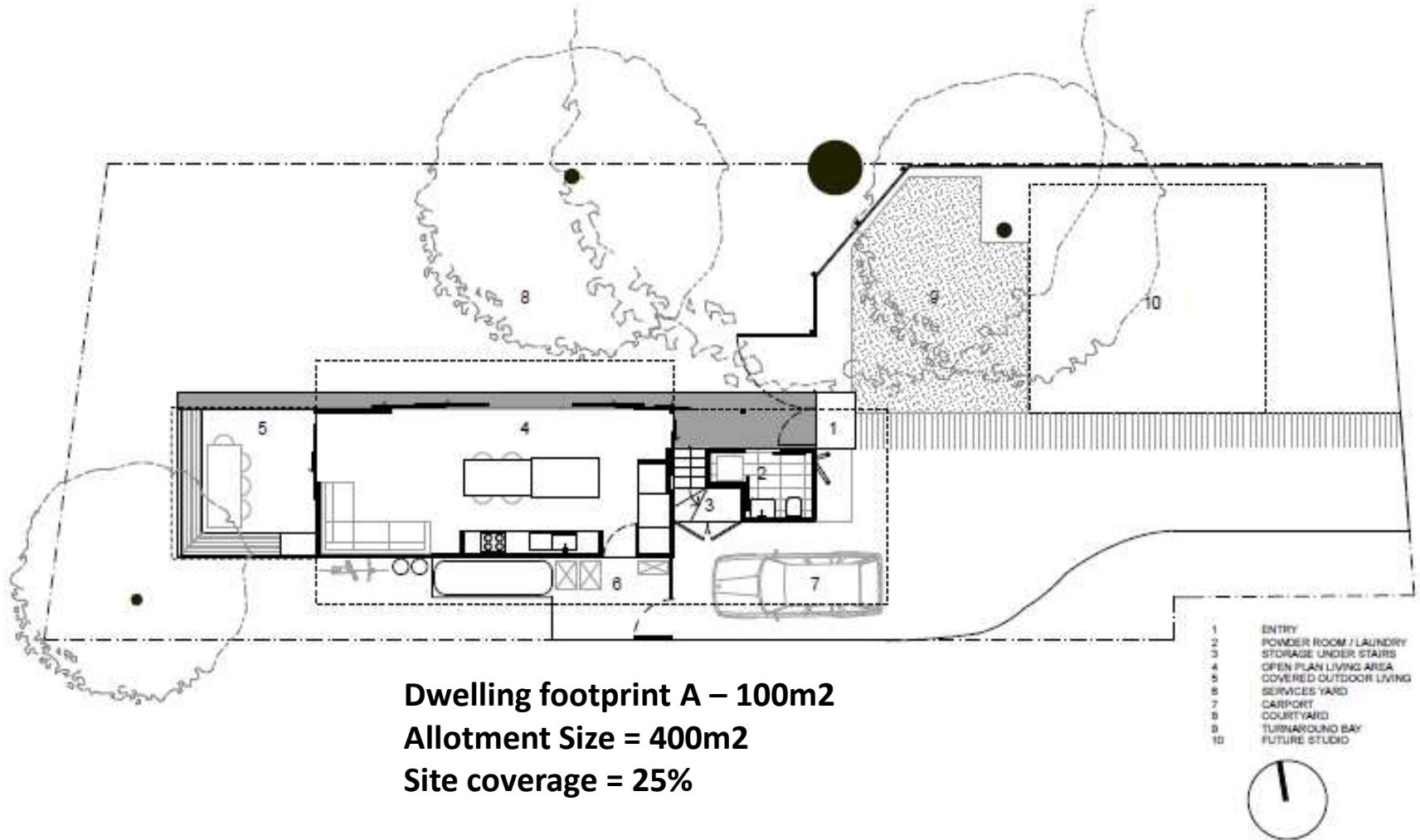


Source: www.shedforce.com



Source: www.marshalls.co.uk

The 100m2 house



Source: Levesque & Derrick Architects, lada.com.au

The 100m2 house



5,000L rainwater tank for:

- Toilet flushing
- Laundry
- garden

Source: Levesque & Derrick Architects, lada.com.au

The 100m² house



Source: Levesque & Derrick Architects, lada.com.au

Christie Walk





www.watersensitivesa.com

Mellissa Bradley
Program Manager
mellissa@watersensitivesa.com