

# Integrating the blue and the grey to keep it green

Cooler, greener Adelaide: shaping our future city

Water Sensitive SA, 20 March 2019



1



2



3

The collage consists of three documents:

- Left Document:** Cover of the book "WSUD: BASIC PROCEDURES FOR 'SOURCE CONTROL' OF STORMWATER". It features logos for Stormwater, AWA, and the University of South Australia. The text includes "A Handbook for Australian practice" and "STUDENT EDITION - with Index". The cover image shows a landscaped area with a path and greenery. The editor is John R Argue.
- Middle Document:** A page titled "On-Site Retention of Stormwater". It references "Development Act 1993" and "Minister's Specification SA 75AA" from September 2002. The Planning SA logo is at the bottom.
- Right Document:** A blue cover for "Chapter 2 WSUD Measures for Different Types and Scale of Development". It includes the text "Securing tomorrow's water today" and logos for the Department of Water and Environmental Planning and the Department of Environment and Planning.

4



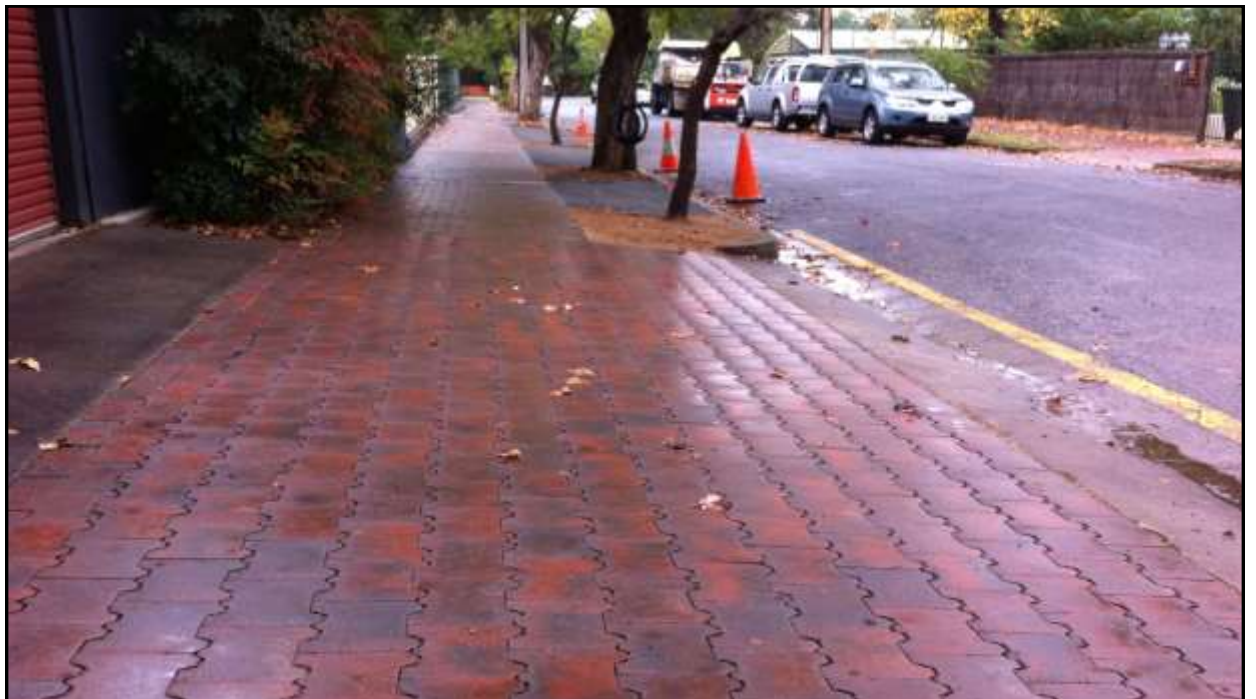
5



6



7



8



9



10



**Brookside Road Springfield**

11



**Wheaton & Kegworth Roads Melrose Park**

12

