

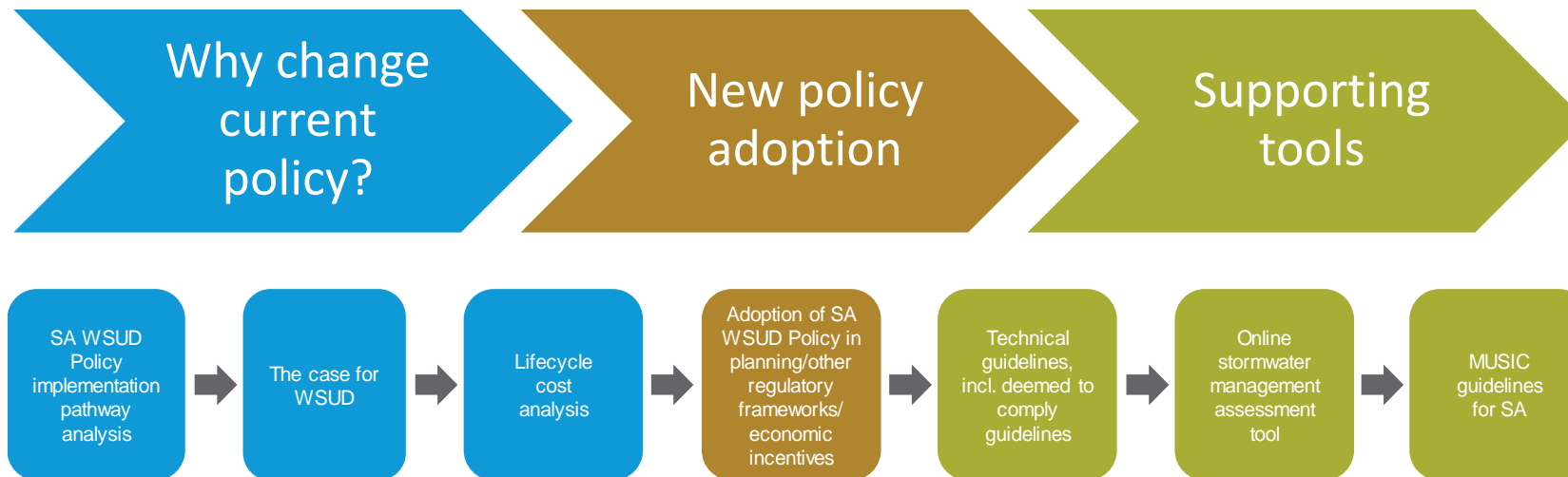


Development support tools
across a range of scales

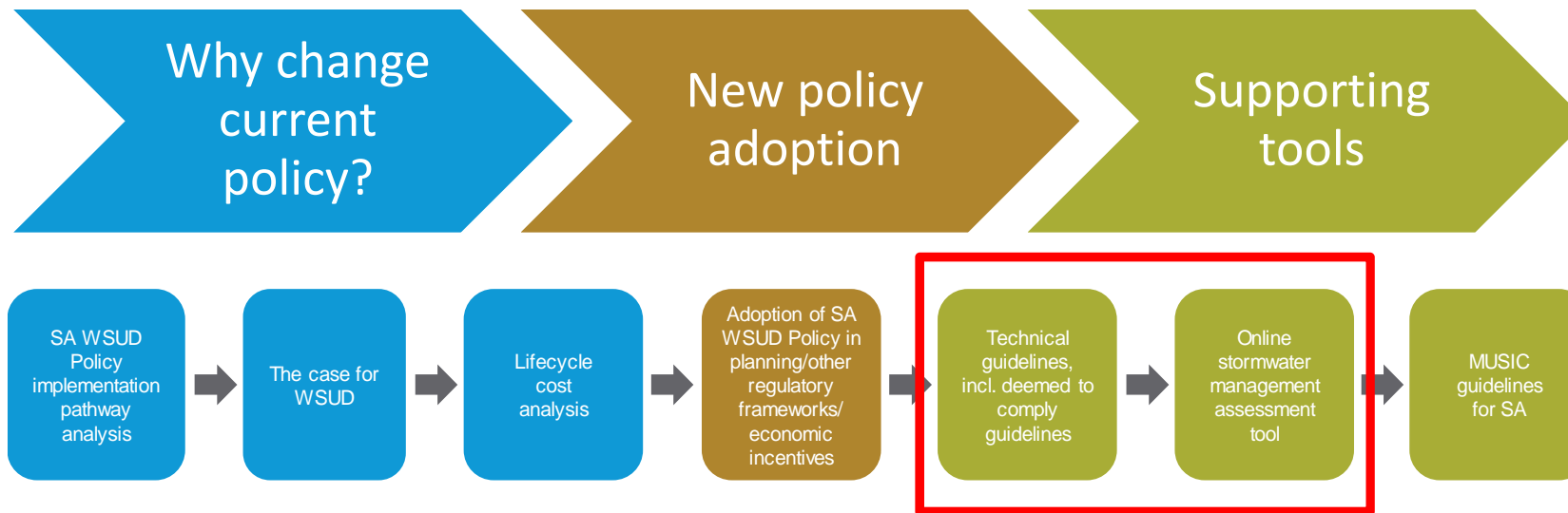
Mellissa Bradley, Program Manager



Bringing about change ...



Bringing about change ...



Stormwater Management Plan and Integrated Water Management Plan



Figure 1 - Status of stormwater management plans in Adelaide and Mount Lofty Ranges NRM Board Region



Stormwater Runoff Quality

45%

retention of typical annual urban load of total nitrogen.

60%

retention of typical annual urban load of total phosphorus.

80%

retention of typical annual urban load of suspended solids.



Caltex, 734 Marion Rd, Marion

Source: *Baden Myers*



Cooke Reserve, Royal Park.

Source: *City of Charles Sturt*

Flood management

capacity of the existing drainage system is not exceeded.

no increase in the 5 year ARI peak flow compared to existing conditions.

no increase in flood risk for the 100 year ARI peak flow, compared to existing conditions.



Bowden Urban Village

Source: Water Sensitive SA

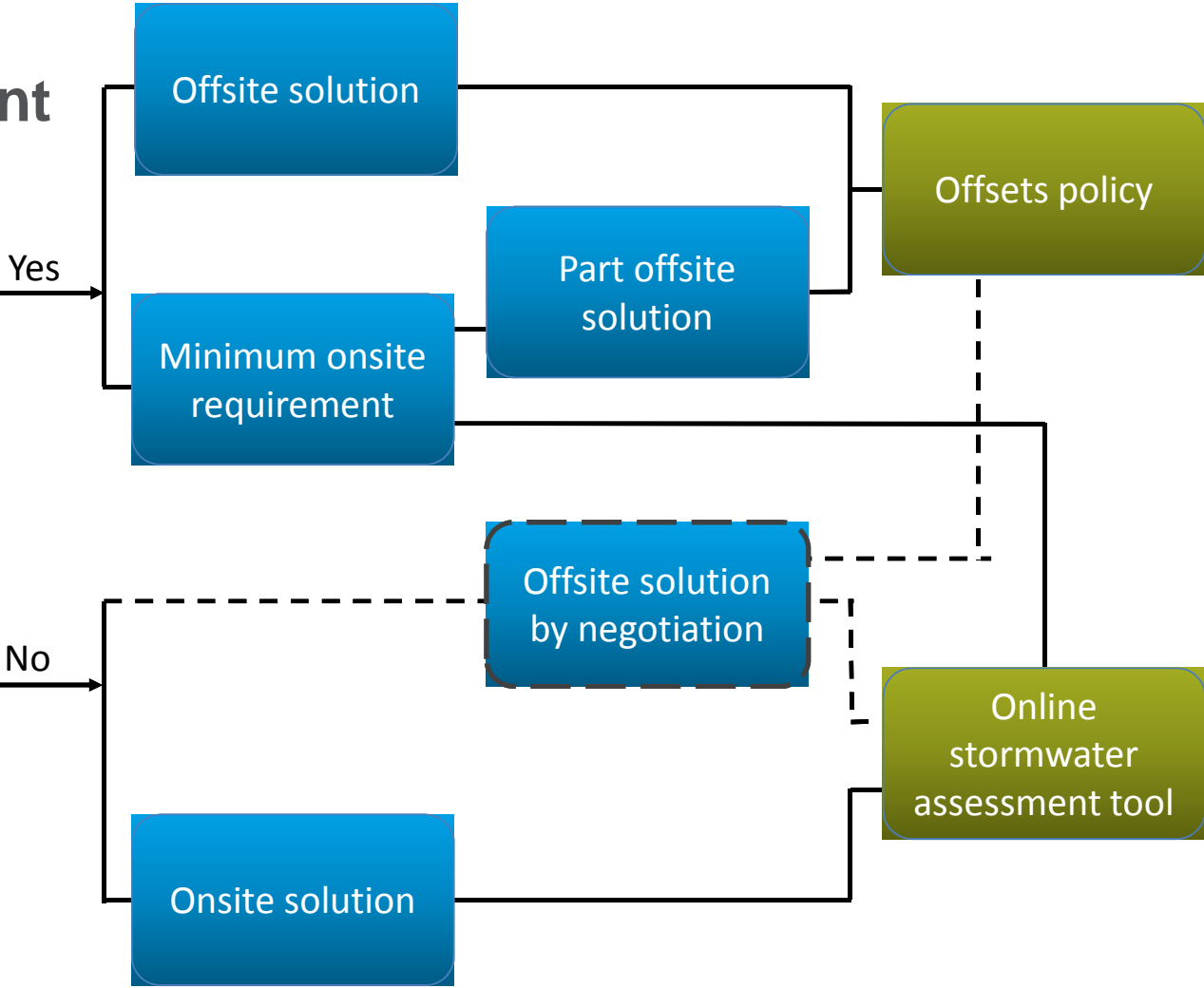


Kirkcaldy Avenue, Grange

Source: Baden Myers

Simple development

Is there an SMP/IWMP for subject area?

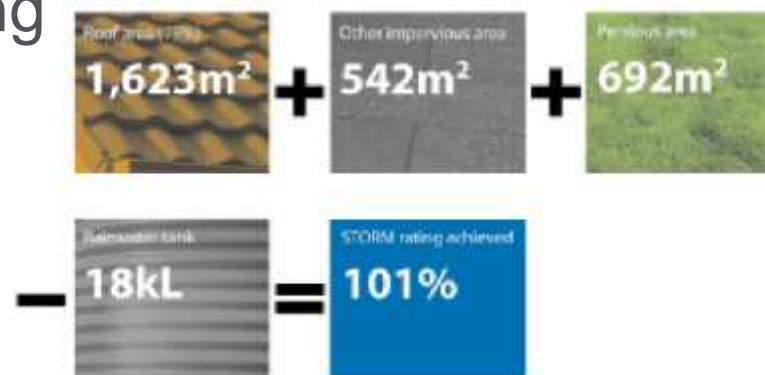


Online stormwater assessment tool - for small scale/simple developments



Optimise solutions for site :

- Impervious area
- Rainwater storage (retention and re-use)
- Raingardens
- Permeable paving



Source: City of Moonee Valley

Onsite



Offsets



Stawell Street, Mentone (Vic.)

Source: M Dobbie



Redfern, NSW

Source: M Dobbie



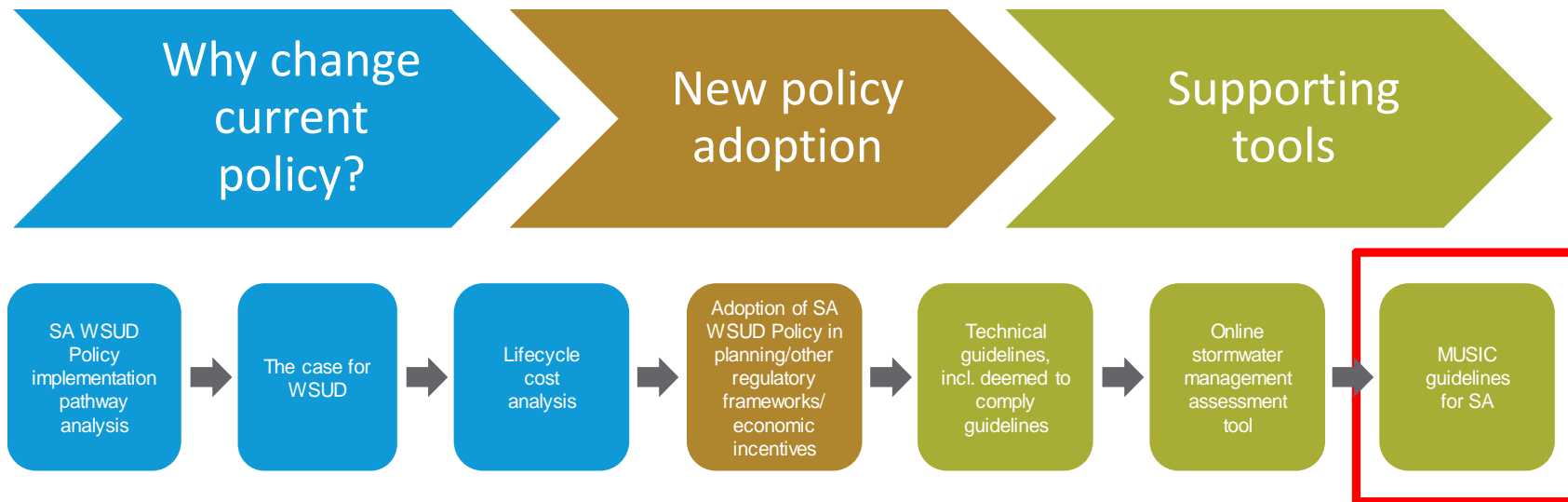
Lochiel Park

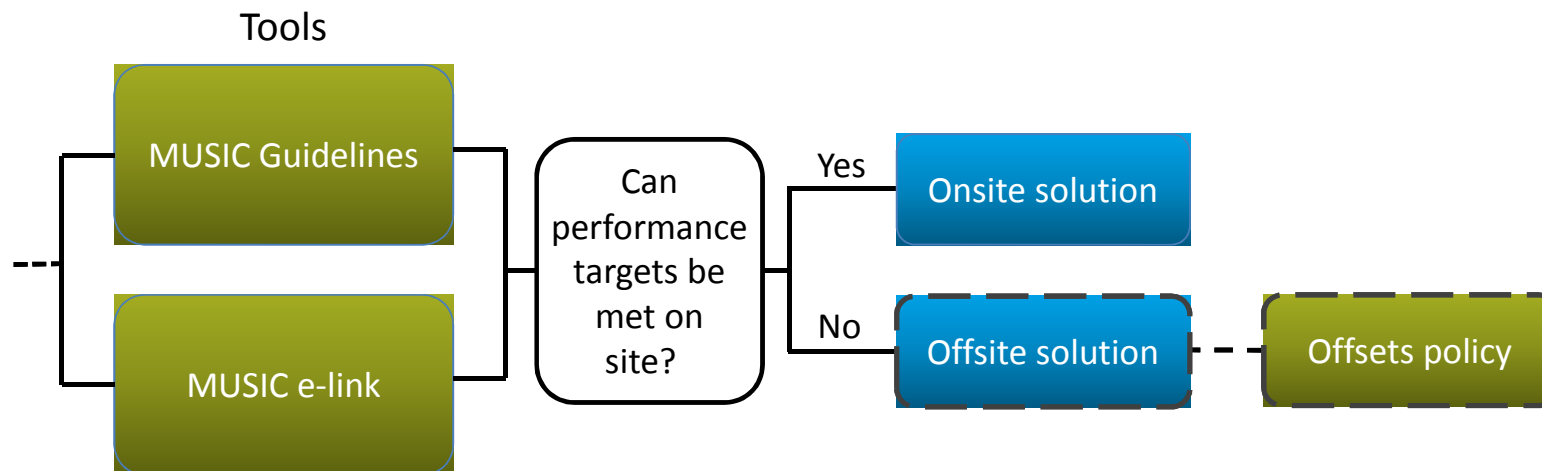
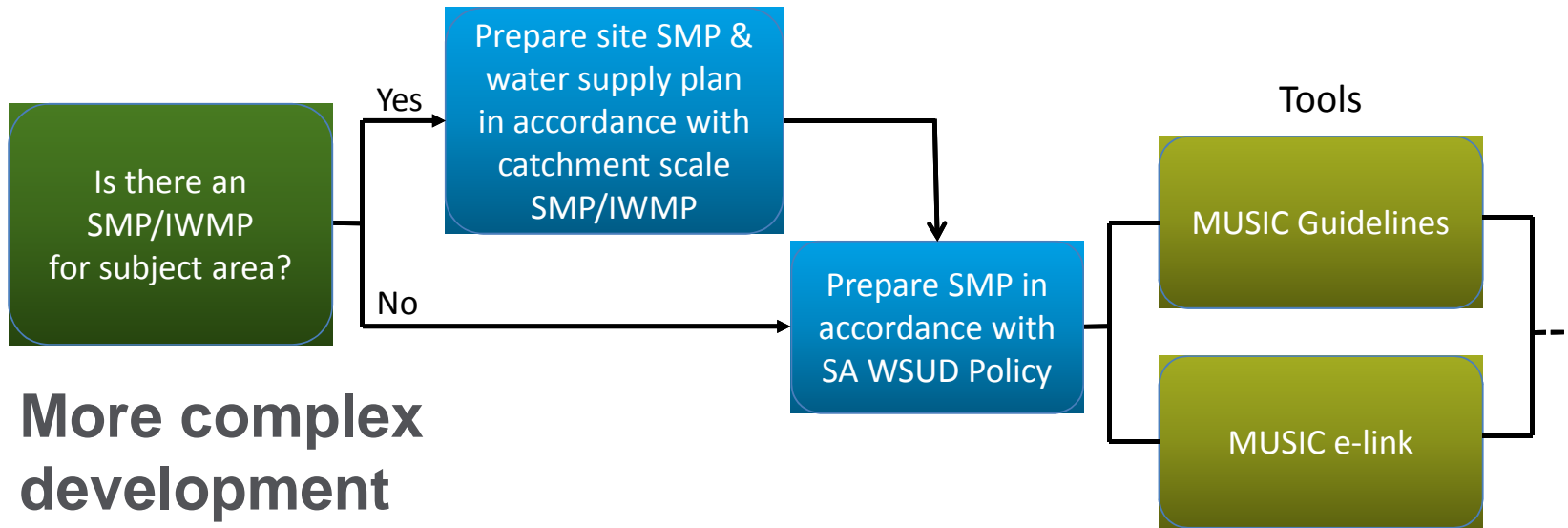


Springbank Waters, Burton

Source: City of Salisbury

Bringing about change ...





Tools can provide:

- Flexibility
- Consistency
- Efficiency in the application and approval process



Oaklands Wetland

Source: Michael Mullan,



www.watersensitivesa.com

Mellissa Bradley
Program Manager
mellissa@watersensitivesa.com

www.watersensitivesa.com

LIVEABLE WATER SENSITIVE COMMUNITIES.